



REVOLUTION JERSEY

Canterbury official Kit
supplier to London Scottish



1904 THE BIRTHPLACE

Established in 1904, Canterbury has built a reputation for providing the world's toughest active-wear, constantly challenging sporting boundaries to pursue the latest technological advancements both on-and off-the-field. A tough and uncompromising approach to manufacturing has seen Canterbury produce uniforms for the New Zealand Army throughout World War 1 and kit out the All Blacks for over 75 years. Backed by a century of rigorous on-field testing, Canterbury now prides itself on bringing you quality and innovative designs to kit out all of your teams needs.



2015 TEAMWEAR

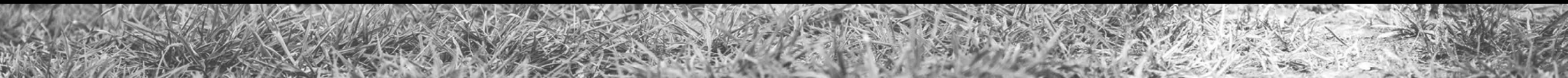
In teams up and down every country, in every corner of the world, there is a shared passion and love of your chosen sport that inspires Canterbury to constantly challenge sporting boundaries. We provide you with Teamwear that can stand up to the toughest of extremes, to help give you and your team the winning edge.



DESIGN YOUR OWN KIT

To produce your ultimate team kit with all the hidden extras, the Made To Order range is just what you need. Utilising technology from our latest professional rugby jerseys as well as wicking properties from our cutting-edge BaseLayer garments, you will not be let down by the variety of fabrics, fits and designs. Whatever your colour, whatever your logo, whatever your sport... we have the kit for you and your team.

To design your own kit online or find out more information about Canterbury Teamwear, please visit our website www.cccteam.com



PERFORMANCE



STRENGTH

The durability to resist the stress and strain of full contact sport.



WICKS MOISTURE

Fabric wicks moisture, removing perspiration from your skin keeping you cool and dry.



BREATHABLE

Allows air to flow between skin and outer of the garment keeping the body cool and dry.



THERMAL REGULATION

Helps to maintain body temperature.



SHOWER RESISTANT

Provides protection against showers.



ATHLETIC FIT

The ability to move and stretch easily according to the situation.

CONTENTS

RUGBY

05

SOCKS

07

CRICKET

10

CLASSICS

12

MERCURY TCR

19

BASELAYER

22

BAGS & ACCESSORIES

24

TECHNICAL INFO

28



CHALLENGE JERSEY



MENS: B97 5774

SIZES: S M L XL 2XL 3XL

JUNIOR: B87 5774

SIZES: 6-14

- 100% Polyester, 300gsm
- Slim Fit Jersey with Loop 21 neckline
- Piece dyed
- CCC logo embroidery on right chest

CHALLENGE HOOP JERSEY



MENS: B97 5775

SIZES: S M L XL 2XL 3XL

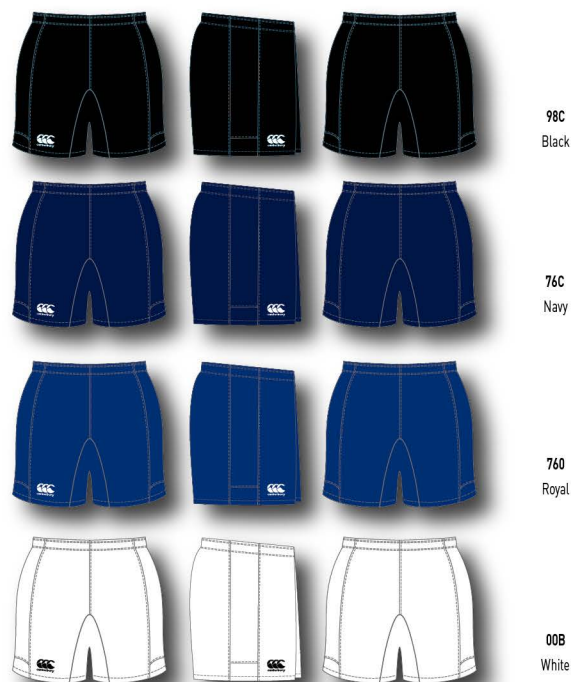
JUNIOR: B87 5775

SIZES: 6-14

- 100% Polyester, 300gsm
- Slim Fit Jersey with Loop 21 neckline
- Piece dye with sublimite hoop panel
- CCC logo embroidery on right chest



ADVANTAGE SHORT



MENS: E52 271 **SIZES:** 28-44

- 100% Polyester Twill, 215gsm (main body)
82% Nylon/18% Spandex tricot (gusset)
- Stretch star gusset for com imum manoeuvrability
- Nonslip elasticated waist and internal drawcord
- Internal fob pocket
- CCC logo heat applied on right leg

PROFESSIONAL SHORT



100% Cotton Drill Short, 285gsm **MENS:** E52 913 **SIZES:** 24-46

100% Polyester, 230gsm **MENS:** E52 2378 **SIZES:** 24-46

- Elasticated waist with internal drawcord
- Welt seams, side pockets taped inside
- CCC logo embroidery on right leg



PLAYING SOCK



STYLE CODE: T23 947

SIZES: XS (11-1), S (2-5), M (6-10), L (11-13), XL (14-16 Kingsize)

- 100% Polyamide
- Hard wearing with a comfortable cushioned foot

PLAYING CAP SOCK



STYLE CODE: T23 948

SIZES: XS (11-1), S (2-5), M (6-10), L (11-13), XL (14-16 Kingsize)

- 100% Polyamide
- Hard wearing with a comfortable cushioned foot
- Contrast turnover

HOOPED PLAYING SOCK



STYLE CODE: T23 949

SIZES: XS (11-1), S (2-5), M (6-10), L (11-13), XL (14-16 Kingsize)

- 100% Polyamide
- Hard wearing with a comfortable cushioned foot

PERFORMANCE SOCK

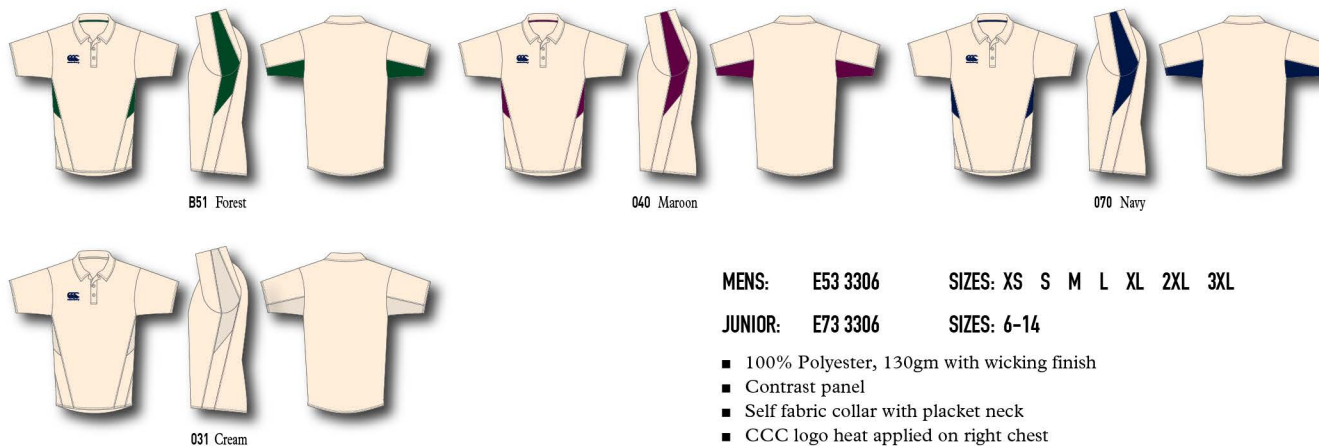


STYLE CODE: E23 795

SIZES: S (2-5), M (6-10), L (11-13), XL (14-16)

- 100% Polyamide
- Mesh ventilation on bridge of foot & calf for improved comfort
- Ankle support & arch support bridge for better performance
- Real heel for best fit

CLASSIC CRICKET SHIRT



MENS: E53 3306 **SIZES:** XS S M L XL 2XL 3XL

JUNIOR: E73 3306 **SIZES:** 6-14

- 100% Polyester, 130gm with wicking finish
- Contrast panel
- Self fabric collar with placket neck
- CCC logo heat applied on right chest

CLASSIC CRICKET TROUSER

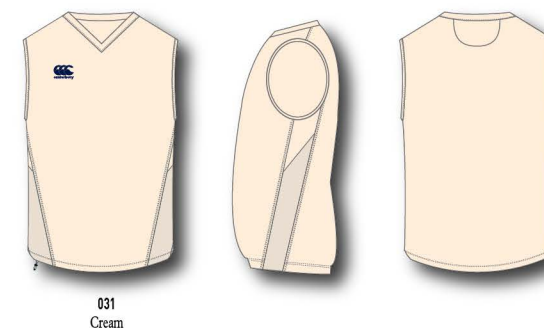


MENS: E51 2151 **SIZES:** XS S M L XL 2XL 3XL

JUNIOR: E71 2151 **SIZES:** SB MB LB

- 100% Polyester Pique, 250gsm
- CCC logo heat applied on right leg

CLASSIC CRICKET OVERSHIRT



MENS: E55 2713 **SIZES:** XS S M L XL 2XL 3XL

JUNIOR: E75 2713 **SIZES:** SB MB LB

- 100% Polyester Bonded Fleece
- Self fabric collar
- CCC logo heat applied on right chest



WAIMAK POLO



MENS:	E53 2768	SIZES:	S M L XL 2XL 3XL	
WOMENS:	E63 2768	SIZES:	8-18	Not available in 922
JUNIOR:	E73 2768	SIZES:	6-14	Not available in 468

- 65% Polyester 35% Cotton Pique 250gsm
- Knit rib and Cuffs, Button placket neck
- Side seam vents with contrast herringbone tape
- Contrast triple bar tack signature at hem
- CCC logo embroidered on right chest

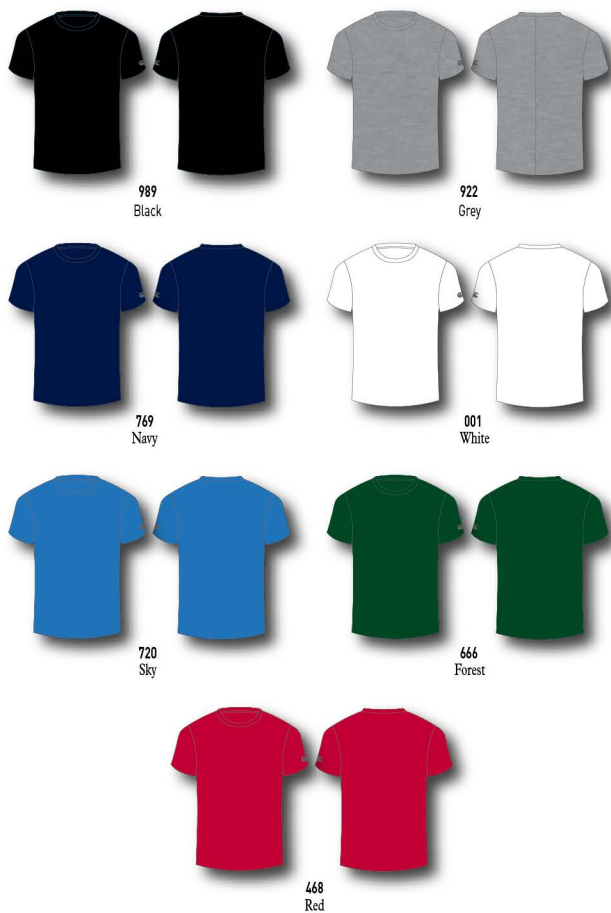
LAPTOP HOODY



MENS:	T55 2315	SIZES:	S M L XL 2XL 3XL	
WOMENS:	T65 2315	SIZES:	8-18	
JUNIOR:	T75 2315	SIZES:	6-14	

- 60% Cotton 40% Polyester, 340gsm
- Front Kangaroo style pocket
- Ribbed Cuffs and Hem
- CCC logo embroidered on right chest
- No drawcord on junior style

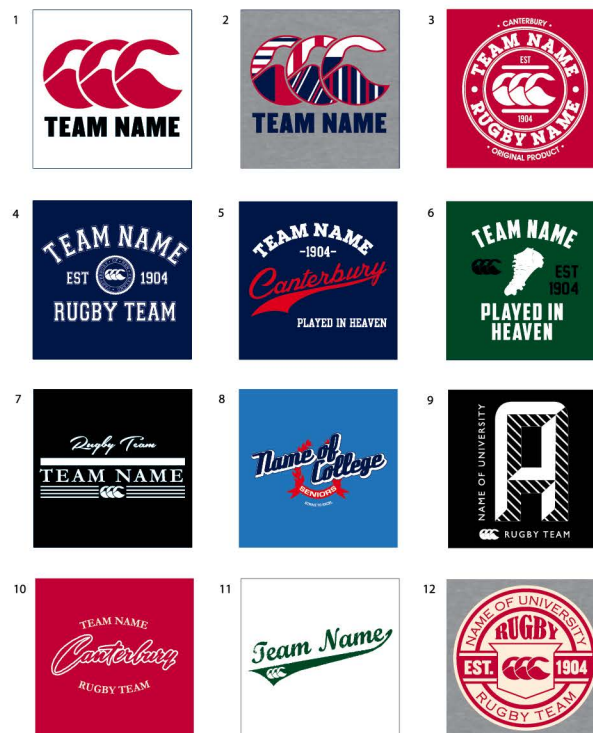
SHORT SLEEVE PLAIN T-SHIRT



MENS: T54 5166 **SIZES:** S M L XL 2XL 3XL
WOMENS: T64 5166 **SIZES:** 8-16 Not available in 720 / 666 / 468
JUNIOR: T74 5166 **SIZES:** 6-14 Not available in 720 / 666 / 468

- 180gms Basic Cotton Short Sleeve Tee
- Allows addition & positioning of CCC / Sponsors logo by request
- Self colour CCC embroidered logo on left sleeve

PRINT OPTIONS



SUGGESTED LOGO PLACEMENTS



SUGGESTED LOGO PLACEMENTS



SKORT



989 Black



989 Back



989 Short under skort



769 Navy



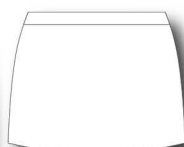
769 Back



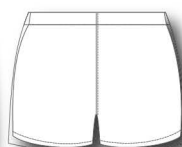
769 Short under skort



001 White



001 Back



001 Short under skort

WOMENS: E67 136 SIZES: 6-18

JUNIOR: E77 136 SIZES: 6-14

- 80% Nylon, 20% Elastane, 205gsm
- Lightweight and flexible
- CCC logo print on left leg

TECH SHORT



989 Black



989 Side



989 Back



769 Navy



769 Side



769 Back



001 White



001 Side



001 Back

MENS: E52 2278 SIZES: S M L XL 2XL 3XL

JUNIOR: E72 2278 SIZES: 6-14

- 100% Polyester
- Lightweight Quick Dry Training short
- Elasticated waist with drawcord
- CCC logo embroidery on right leg
- Side pockets

LINED STADIUM PANT



989 Black



769 Navy

MENS: E51 463 SIZES: XS S M L XL 2XL 3XL
JUNIOR: E71 463 SIZES: 6-14

- 100% Polyester TZ Tactel Pant, 110gsm
- Cotton Liner with taffeta lower leg
- Elasticated waist with internal drawcord, elasticated hem
- Full length zips with side pockets
- CCC Logo and Canterbury of New Zealand Embroidery on right leg

OPEN HEM STADIUM PANT



989 Black



769 Navy

MENS: E51 182 SIZES: XS S M L XL 2XL 3XL
WOMENS: E61 333 SIZES: 8-18
JUNIOR: E71 182 SIZES: 6-14

- 100% Polyester TZ Tactel Pant, 110gsm
- Cotton liner with taffeta lower leg, elasticated waist with internal drawcord, open hem with velcro cuff adjuster
- Full length zips with side pockets
- CCC logo and Canterbury of New Zealand embroidery on right leg

COMBINATION PANT



989 Black



922 Grey



975 Charcoal



769 Navy

MENS: E51 1546 **SIZES:** S M L XL 2XL 3XL

JUNIOR: E71 1546 **SIZES:** 6-14

- 60% Cotton / 40% Polyester brushed back fleece sweat pant, 340gms
- Elasticated waist with drawcord
- Side pockets
- Open hem
- CCC logo embroidered on right leg

CLASSIC TRACK PANT



989 Black



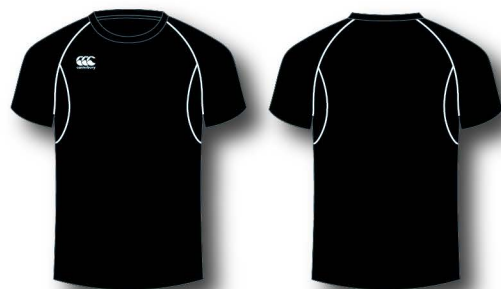
769 Navy

MENS: T51 2135 **SIZES:** S M L XL 2XL 3XL

JUNIOR: T71 2135 **SIZES:** 6-14

- 100% Polyester TZ Tactel, 110gsm
- Mesh liner with taffeta lower leg, elasticated waist with internal drawcord, open hem
- Contrast piping detail
- Side pockets
- CCC logo embroidery on right leg

CLASSIC DRY SHORT SLEEVE T-SHIRT



989
Black / White



769
Navy / White

CLASSIC DRY POLO



989
Black / White



769
Navy / White

CLASSIC DRY SINGLET



989
Black / White



769
Navy / White

MENS: E54 5480 SIZES: S M L XL 2XL 3XL
WOMENS: E64 5480 SIZES: 8-16
JUNIOR: E74 5480 SIZES: 6-14

- 100% Polyester, 150gsm
- Quick drying Tee with stitch detail
- CCC logo embroidered on right chest

MENS: E53 3147 SIZES: S M L XL 2XL 3XL
WOMENS: E63 3147 SIZES: 8-16
JUNIOR: E73 3147 SIZES: 6-14

- 100% Polyester, cut & sew, 150gsm
- Quick drying Tee with stitch detail
- CCC logo embroidered on right chest

MENS: E56 1060 SIZES: S M L XL 2XL 3XL

- 100% Polyester, 150gsm
- Quick drying Singlet with stitch detail
- CCC logo embroidered on right chest

CLASSIC FLEECE



989
Black / White



769
Navy / White

CLASSIC MID-LAYER TRAINING TOP



989
Black / White



769
Navy / White

CLASSIC TRACK JACKET



989
Black / White



769
Navy / White

MENS: E58 2996 **SIZES:** S M L XL 2XL 3XL 4XL
WOMENS: E68 2996 **SIZES:** 8-16
JUNIOR: E78 2996 **SIZES:** 6-14

- 100% Polyester, 260gsm
- Cut & Sew Microfleece with contrast piping detail
- Lycra binding on cuffs and hem
- Drawcord in hem
- CCC Embroidered logo on right chest

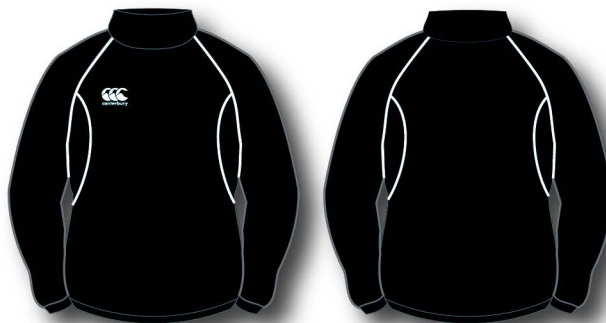
MENS: E55 3143 **SIZES:** S M L XL 2XL 3XL 4XL

- 100% Polyester, 260gsm
- Cut & Sew Microfleece with contrast piping detail
- Open cuff & bungee cord on hem
- Drawcord in hem
- CCC Embroidered logo on right chest

MENS: E58 2993 **SIZES:** S M L XL 2XL 3XL
JUNIOR: E78 2993 **SIZES:** 6-14

- 100% Polyester TZ Tactel, 100% Polyester mesh lining, 100% Nylon taffeta lower sleeve
- Contrast piping detail
- Side zip pockets
- Elasticated cuffs & hem
- CCC embroidered logo on right chest

CLASSIC CONTACT TOP



989
Black / White



769
Navy / White

MENS: E58 2994 **SIZES:** S M L XL 2XL 3XL
JUNIOR: E78 2994 **SIZES:** 6-14

- 100% Nylon Ripstop Dobby outer fabric, 600mm PU (Water resistant) with 100% Polyester mesh lining
- Showerproof
- Contrast piping detail
- No bungee cord (safety feature)
- CCC Embroidered logo on right chest

STADIUM JACKET



989
Black / White



769
Navy / White

MENS: E58 2544 **SIZES:** S M L XL 2XL 3XL 4XL

- 100% Nylon Oxford, 600mm showerproof fabric, 100% Polyester padded liner
- Padded "STADIUM" jacket with concealed hood in collar
- Microfleece liner in collar for comfort
- Full length centre front zip with storm flap and stud fasteners
- Side zip pockets and internal wallet pocket
- Contrast piping detail
- Adjustable bungee cord to hood and lower hem
- CCC logo embroidery on right chest
- CCC logo silhouette embroidery on sleeve

CLASSIC 1/4 ZIP RAIN JACKET



989
Black / White



769
Navy / White

MENS: E58 2995 **SIZES:** S M L XL 2XL 3XL
JUNIOR: E78 2995 **SIZES:** 6-14

- 100% Nylon Ripstop Dobby outer fabric, 600mm PU (water resistant), 100% Polyester mesh lining
- Showerproof rain jacket with hood and side zip pockets
- Cut and Sew with contrast piping detail
- Adjustable bungee cord to hood and lower hem
- CCC Embroidered logo on right chest

CLASSIC FULL ZIP RAIN JACKET



989
Black / White



769
Navy / White

WOMENS: E68 2995 **SIZES:** 8-16

- 100% Nylon Ripstop Dobby outer fabric, 600mm PU (water resistant), 100% Polyester mesh lining
- Showerproof rain jacket with hood and side zip pockets
- Cut and Sew with contrast piping detail
- Adjustable bungee cord to hood and lower hem
- CCC Embroidered logo on right chest

PRO SUBS COAT



BEANIE



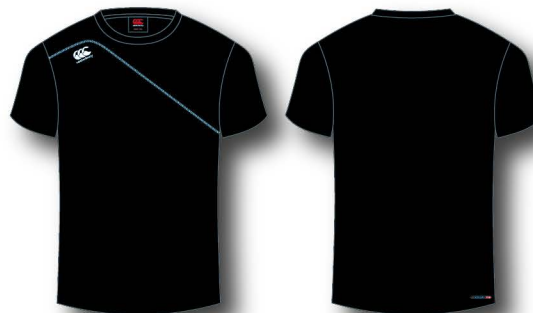
MENS: E58 618 SIZES: S M L XL 2XL 3XL

- 100% Polyester Ripstop Nylon with padded quilt liner, 600mm shower proof
- 3/4 length waterproof padded subs jacket with hood
- Ideal for bench use and side line coaching
- Full length centre front zip
- Side zip pockets
- Velcro cuff adjusters
- CCC logo embroidery on right chest & print centre back

MENS: E30 2133 SIZES: ONE SIZE

- 100% Knitted Acrylic Beanie
- CCC logo embroidery centered

MERCURY TCR T-SHIRT



989
Black / White



769
Navy / White

MENS: E54 5458 SIZES: S M L XL 2XL 3XL 4XL

- 100% Polyester pique
- Cut & sew construction
- Flatlock seams for improved comfort
- CCC printed logo

MERCURY TCR MICROFLEECE



989
Black / White



769
Navy / White

MENS: E55 2480 SIZES: S M L XL 2XL 3XL 4XL

- 100% Polyester Microfleece
- Brushed anti-pill fabric
- Side zip pockets
- Elasticated cuffs
- Embroidered CCC logo

SHOWERPROOF



NYLON RIPSTOP FABRIC



RIBBED CUFFS & COLLAR



MERCURY TCR

MERCURY TCR HOODY



989
Black / White



769
Navy / White

MENS: E55 2483 **SIZES:** S M L XL 2XL 3XL 4XL

- 60% Cotton, 40% Polyester 350gsm
- Side zip pockets
- CCC Embroidered Logo on right chest & right sleeve
- Bungee cord with toggle on hood

MERCURY TCR FULL ZIP SHOWER JACKET



989
Black / White



769
Navy / White

MENS: E58 2961 **SIZES:** S M L XL 2XL 3XL 4XL

- 100% Nylon Ripstop
- 100% Polyester Mesh lining with taffeta sleeve lining
- Showerproof (600mm PU)
- Full zip with side zip pockets
- Bungee cord and toggle at hem and hood
- CCC printed logo

MERCURY TCR CONTACT TOP



989
Black



769
Navy

MERCURY TCR CONTACT PANT



989 Black



769 Navy

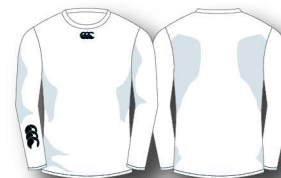
MENS: E58 2964 SIZES: S M L XL 2XL 3XL 4XL

- 100% Nylon Ripstop
- 100% Polyester Mesh lining
- Showerproof (600mm PU)
- Elasticated cuffs and ribbed collar
- CCC printed logo

MENS: E51 1983 SIZES: S M L XL 2XL 3XL 4XL

- 100% Nylon Ripstop
- 100% Polyester Mesh lining with nylon taffeta lower leg lining
- Showerproof (600mm PU)
- Zip opening at lower leg with storm flap
- CCC printed logo

ESSENTIALS COLD LONG SLEEVE



001 White



989 Black



769 Navy



468 Red



703 Olympian Blue



113 Pink



467 Maroon

MENS: E54 4110

SIZES: XS S M L XL 2XL 3XL

JUNIOR: E74 4110

SIZES: JSM JMD JLG

- 65% Nylon / 21% Polyester / 14% Lycra
- Moisture management / Anti bacterial finish
- Flat seaming on armhole to prevent chafing
- CCC logo centre front below crew neck & CCC logo on right sleeve
- Cold BaseLayer logo on outside centre back neck with size details, for comfort



WICKS MOISTURE FROM SKIN



BOOSTS EVAPORATION OF SWEAT



PROACTIVE INSULATION FOR COLD ENVIRONMENTS



ANTI CHILL FACTOR MAINTAINS CONSTANT BODY TEMPERATURE



ANTI ODOUR AGENTS



COLD SHORT



989
Black



769
Navy



001
White

MENS: E52 1633 **SIZES:** XS S M L XL 2XL 3XL

JUNIOR: E72 1633 **SIZES:** JSM JMD JLG (not available in 769 & 001)

- 65% Nylon / 21% Polyester / 14% Lycra
- Moisture management / Anti bacterial finish
- Flat seaming for improved fit
- CCC logo on the front right leg
- Cold BaseLayer logo on outside back waist with size details, for comfort
- CCC jacquard elastic waist

COLD LEGGING



989
Black



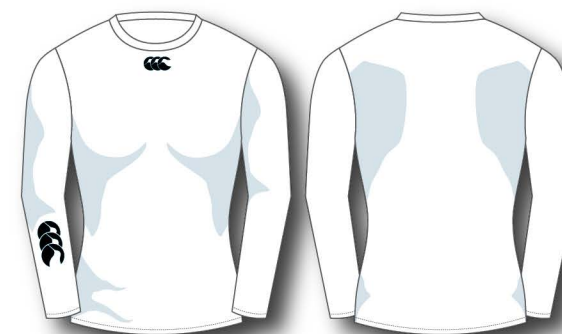
001
White

MENS: E51 1445 **SIZES:** XS S M L XL 2XL 3XL

JUNIOR: E71 1445 **SIZES:** JSM JMD JLG (not available in 001)

- 65% Nylon / 21% Polyester / 14% Lycra
- Moisture management / Anti bacterial finish
- Flat seaming for improved fit
- CCC logo on the front and CCC logo on rear right leg
- Cold BaseLayer logo on outside back waist with size details, for comfort
- CCC jacquard elastic waist

WOMENS ESSENTIAL COLD LONG SLEEVE



001
White



989
Black

WOMENS: E64 4110 **SIZES:** XS S M L XL 2XL

- 65% Nylon / 21% Polyester / 14% Lycra
- Moisture management / Anti bacterial finish
- Flat seaming on armhole to prevent chafing
- CCC logo centre front below crew neck & CCC logo on right sleeve
- Cold BaseLayer logo on outside centre back neck, for comfort

CCC CLUB BOOTBAG



769 Navy



989 Black

CODE: E20 910

SIZE: ONE SIZE

- 36 x 18 x 13cm (H x W x D)
- 600D Polyester PU / Ripstop polyester
- Zipped entry

CLUB II BACKPACK



769 Navy



989 Black

CODE: E20 905

- 47 x 32 x 22cm (H x W x D)
- 600D Polyester PU / Ripstop polyester
- Top entry zip opening to main compartment
- Zipped front pocket
- Mesh side pockets
- Adjustable padded shoulder straps
- Internal organiser

CLUB II SPORTSBAG



769 Navy



989 Black

CODE: E20 906

- 31 x 64 x 28cm (H x W x D)
- 600D Polyester PU / Ripstop polyester
- Top entry zip opening to main compartment
- Zipped side pockets
- Haul handle

CLUB II HOPPER



769 Navy



989 Black

CODE: E20 907

- 43 x 64 x 43cm (H x W x D)
- 600D Polyester PU / Ripstop polyester
- Top entry zip opening to main compartment
- Zipped side pockets
- Haul handle
- Hard base

CLUB KIT BAG



989 Black

CODE: E20 289

- 38 x 95 x 34cm (H x W x D)
- 600D Polyester PU / Ripstop polyester
- Top entry zip opening to main compartment
- Haul handle

CCC TRAVEL WHEELIE BAG



989 Black

CODE: E20 475

- Perimeter double zips
- Side grab handles
- Heavy duty back panel
- Durable wheels
- Extendable top handle

BALL CARRIER



989 Black

CODE: E20 1017

- Carries up to 15 sizes 5 balls
- Sturdy carry strap
- Cord pull-tie
- Mesh panels for improved air circulation
- Approx, 250 litres

SPORTS WATERBOTTLE



001 White

CODE: E21 918

SIZE: ONE SIZE

- CCC water bottle
- Clear exterior with printed CCC logo to front
- Contrast coloured non-drip valve
- Shaping to middle for easy grip

WATERBOTTLE CARRIER



989 Black

CODE: E21 959

SIZE: ONE SIZE

- CCC Water Bottle Carrier
- Foldable for easy storage
- Note – Bottles not included

SIZING

STANDARD SIZES

	XS	S	M	L	XL	2XL	3XL	4XL
CHEST inch	33"	36"	39"	42.5"	46"	49"	52"	55"
cm	84	92	100	108	116	124	132	140
WAIST inch	27"	30"	33"	36"	39"	42.5"	46"	49"
cm	68	76	84	92	100	108	116	124

JUNIOR SIZES

	4	6	8	10	12	14	SB	MB	LB
CHEST inch	23"	25"	27"	29"	31"	35-36"	23-27"	27-29"	29-31"
cm	58	63.5	68	73	78.5	88-92	63.5-68	68-73	73-78.5
WAIST inch	22"	23"	24"	26"	27"	29"	22-24"	24-26"	26-27"
cm	56	58	61	65	69	74	56-61	61-65	65-69

WOMENS SIZES

	XXS/6	XS/8	S/10	M/12	L/14	XL/16	2XL/18
CHEST inch	30"	32"	34"	36"	38"	40"	42"
cm	77	82	87	92	97	102	107
WAIST inch	22"	24"	26"	28"	30"	32"	34"
cm	57	62	67	72	77	82	87
HIPS inch	33"	35"	37"	39"	41"	43"	45"
cm	85	90	95	100	105	110	115

SOCK SIZES

	XS	S	M	L	XL	XXL
UK	9-11.5	12-3	4-6	7-11	12-13	14
EURO	27-30	31-36	37-40	40-46	46-47	48
US	8-10	1-4	4.5-7.5	7.5-11.5	12.5-13	13-14

LOGO GUIDE

There are two standard Canterbury branding styles – the “three Cs” logo, and then the same logo with “canterbury” text below. Each size of logo has a code number to identify the specific branding; the versions with the canterbury text below have the word “Lower” after the code. To the right is an image of both styles as well as sizing details for the logo codes.

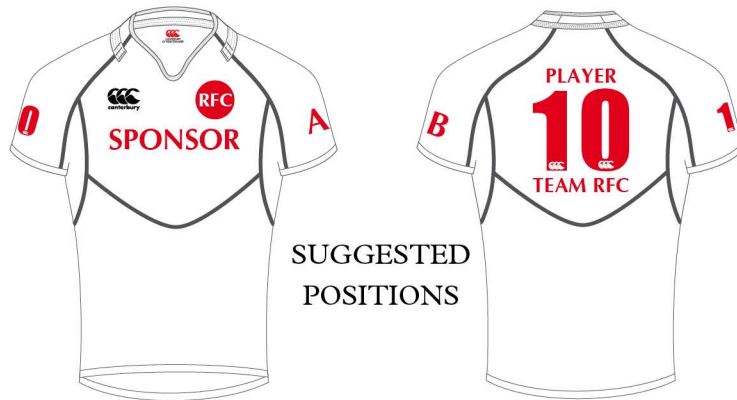
Below are recommended branding sizes for using the CCC logos, although other logo sizes can be ordered provided it will fit onto the specified panels on the garment – speak to your Canterbury Sales Representative for more details.

Please note these are suggested guidelines only and all logo sizes must conform with your specific sports board regulations.



LOGO CODE	WIDTH	HEIGHT	USE
903 Lower 903	40mm 41mm	28.5mm 20.5mm	Caps
904 Lower 904	51.5mm 53mm	37mm 26.5mm	Training items such as tees, polos, training shorts, vests Ladies playing kit
916 Lower 916	65mm 67mm	46.5mm 33.5mm	Slim fit mens jerseys, Junior jerseys, International fit jerseys Playing shorts, Jackets and fleeces
911 Lower 911	87.5mm 90mm	63mm 47mm	Standard fit mens jerseys
914 Lower 914	146mm 150mm	105mm 75mm	For use on back of garments as large CCC

A full printing and embroidery service is available for your crest, logo and player personalisation.
Please see below or speak to your Canterbury sales representative for more information.



SUGGESTED
POSITIONS



STANDARD 1 COLOUR NUMBER - 18cm/20cm HIGH



STANDARD 2 COLOUR NUMBER - 18cm/20cm HIGH (Used for print)



STANDARD 2 COLOUR OUTLINED NUMBER - 18cm/20cm HIGH (Used for sublimation)



RWC-11 1 COLOUR NUMBER - 18cm/20cm HIGH



RWC-11 2 COLOUR NUMBER - 18cm/20cm HIGH (Used for print)

THERMO NUMBER OPTIONS

20cm numbers are recommended for the back of slim fit jerseys, 25cm are recommended for the back of standard fit jerseys, 5cm numbers are recommended for shorts, track pants or chest and sleeve positions. CCC is cut out so fabric behind shows through.

Names can be added across the back shoulders or as initials on the sleeve/chest. Thermo lettering is 5cm in height and available in black, navy, scarlet or white. Screenprinted names are available in requested shades, however thermo is the recommended option.

Sublimated garments – numbers and names can be sublimated into any sublimated garment being made to-order. This is at no additional cost to the garment and it is possible to request specific shades. For non standard colours please advise a Pantone (PMS) shade number. For non-standard CCC numbers please provide images of digits 0-9, for non-standard names please provide font name and file. Non-standard only available for sublimation.

EMBROIDERY

A full embroidery service is available for your crest or logo.

If the logo is already set up the electronic version (eg embroidery disc) will need to be submitted with the order, as well as a worksheet and details of colours required. Maderia thread shades must be provided, otherwise standard Canterbury colours will be used.

If the logo is not set up electronically then we will require a brand manual or high resolution logo specification sheet to set up a disc for you, ensure you explain clearly how your logo is to appear on both dark or light coloured items. The size required for the logo must also be provided. For new disc set ups an image of the disc will be forwarded to you, this will require approval before the disc will be used.

Embroideries will be sampled onto a swatch and a photograph sent electronically for approval before production is started.

PRINTING

Screenprint or thermo print services are available for your crest or sponsor logo.

Please ensure a good quality image of the logo is submitted electronically, the preferred formats are vector or high resolution eps or jpeg. Faxed paper copies, letterheads or garments are not suitable formats.

For logos with text, please provide the font name where possible. Pantone (PMS) colours must be submitted, otherwise standard Canterbury colours will be used.

Sublimated garments – crests and logos can be sublimated into any sublimated garment being made-to-order. This is at no additional cost to the garment.

BADGES

We are able to apply pre-made badges to many fabrics, please ask for more details.

Personalised neck tape and woven labels are available, please ask for more details.

Please note that certain fabrics will be better suited to some application methods than others. If you are unsure of the best embellishments to use please contact your Canterbury sales representative for more information.

Please ensure that you secure permission from the appropriate party before using any logos or images, Canterbury of New Zealand Ltd can not accept any responsibility for the unauthorised use of third party logos or images. Canterbury reserve the right to refuse to apply any name or logo considered offensive or unsuitable.



canterbury