

2014/15 Catalogue



TEAMWEAR

最強の闘球



Ever since Rihachi Mizuno opened his first sporting goods shop in 1906, the Mizuno family has been dedicated to enhancing the performance of athletes, and advancing the role of sport in the community. The same is true today.

With over a century of sporting heritage and leading Japanese technology. Mizuno delivers superior performance products tried and tested by professional and amateur athletes.

Mizuno now offers the ultimate teamwear collection to include state-of-the-art design with the opportunity to create your own kit.



CONTRIBUTING TO SOCIETY THROUGH THE ADVANCEMENT OF
SPORTING GOODS AND THE PROMOTION OF SPORTS.

日本 本物 革新

AUTHENTIC
JAPANESE
INNOVATION

C O N T E N T S

Rugby	6-23
Netball	24-33
Hockey	34-43
Cricket	44-45
Football	46-47
Basketball	48-49
Volleyball	50-51
Athletics	52-53
Rowing	54-55
Cycling	56-57
Socks	58-63
Training	64-81
Stock	82-87
Luggage	88-89
Size charts	90
Printing & embroidery	91
Recommended fonts	92
Logo positioning	93
Colour charts	94-96

CREATE
YOUR
OWN

AT MIZUNO, OUR
TEAMWEAR ISN'T JUST
ABOUT STRIPES, HOOPS
OR QUARTERS.

OUR DYE SUBLIMATION
PRINTING PROCESS
MEANS THE ONLY LIMIT
TO YOUR KIT DESIGN IS
YOUR IMAGINATION.

IF YOU CAN THINK IT,
WE CAN MAKE IT.









CREATE
YOUR
OWN

RUGBY

Whatever standard your team is, you can play in Mizuno professional rugby shirts designed just the way you want them.
Your possibilities are endless.

AUTHENTIC, JAPANESE, INNOVATION.



KATANA FITTED SUB SHIRT

- Mizuno Drylite
- Sublimation polyester/spandex Mix
- Katana Neckline with FlexKnit gusset
- Binding sublimation
- Blind stitching seam
- Body Fit



IKUNO TIGHT FIT SHIRT

- Mizuno Drylite
- Sublimation polyester/spandex Mix
- Ikuno neckline
- Binding sublimation
- Body Fit



KATANA STANDARD SUB SHIRT

- Mizuno Drylite
- Sublimation polyester
- Katana neckline with FlexKnit Gusset
- Binding sublimation
- Blind stitching seam
- Standard fit



SHURIKEN STANDARD SUB SHIRT

- Mizuno Drylite
- Sublimation polyester/spandex Mix
- Shuriken neckline
- Binding sublimation
- Blind stitching seam
- Standard fit



SHURIKEN CUT & SEW SHIRT

- Mizuno Drylite
- 100% polyester knitted
- Shuriken neckline
- Binding sublimation
- Blind stitching seam
- Standard fit



ELITE SUB SHORT

- Mizuno Drylite
- Sublimation Woven 100% Polyester Twill
- Flat lock draw cord
- Inner Grip Waist Band
- Gusset



UMEDA SHORT

- Mizuno Drylite
- Woven 100% Polyester Twill
- Flat lock draw cord
- Inner Grip Waist Band
- Gusset



ELITE SHORT

- Mizuno Drylite
- Woven 100% polyester twill
- Flat lock draw cord
- Inner Grip Waist Band
- Gusset



NANIWA SHORT

- Mizuno Drylite
- Woven drill fabric
- Elasticated waistband
- Flat drawstring



GAME SHORT

- Mizuno Drylite
- Woven drill fabric
- Elasticated waistband
- Flat drawstring



RUGBY SOCK

- Mizuno Drylite
- Durable nylon/polyester/elastane yarn knit
- Reinforced heel and toe
- Half cushioned foot



RUGBY SOCK

- Mizuno Drylite
- Durable nylon/polyester/elastane yarn knit
- Reinforced heel and toe
- Half cushioned foot



RUGBY SOCK

- Mizuno Drylite
- Durable nylon/polyester/elastane yarn knit
- Reinforced heel and toe
- Half cushioned foot



RUGBY SOCK

- Mizuno Drylite
- Durable nylon/polyester/elastane yarn knit
- Reinforced heel and toe
- Half cushioned foot



RUGBY SOCK

- Mizuno Drylite
- Durable nylon/polyester/elastane yarn knit
- Reinforced heel and toe
- Half cushioned foot

See page 10-11 for more information

PRICE:



See page 12-13 for more information

PRICE:



See page 14-15 for more information

PRICE:



See page 16-17 for more information

PRICE:



See page 18-19 for more information

PRICE:





WOMEN'S KATANA FITTED SUB SHIRT

- Mizuno Drylite
- Sublimation polyester/
spandex Mix
- Katana Neckline with
FlexKnit gusset
- Binding sublimation
- Blind stitching seam
- Body Fit



WOMEN'S STANDARD FIT SHIRT

- Mizuno Drylite
- Sublimation polyester/
spandex Mix
- Shuriken neckline
- Binding sublimation
- Blind stitching seam
- Standard fit



ELITE SHORT

- Mizuno Drylite
- Woven 100% polyester twill
- Flat lock draw cord
- Inner Grip Waist Band
- Gusset



NANIWA SHORT

- Mizuno Drylite
- Woven drill fabric
- Elasticated waistband
- Flat drawstring



RUGBY SOCK

- Mizuno Drylite
- Durable nylon/polyester/
elastane yarn knit
- Reinforced heel and toe
- Half cushioned foot



RUGBY SOCK

- Mizuno Drylite
- Durable nylon/polyester/
elastane yarn knit
- Reinforced heel and toe
- Half cushioned foot

See page 20-21 for more
information

PRICE:



See page 22-23 for more
information

PRICE:





USE OUR 3D KIT
DESIGNER @
[MIZUNO.CO.UK](https://www.mizuno.co.uk)

KATANA FITTED SUB SHIRT

K55FS000
L/S Available LK55FS000

CREATE
YOUR
OWN



ELITE SUB SHORT

55ESS000 / J55ESS000

CREATE
YOUR
OWN



RUGBY SOCK

R2EX3W1

CREATE
YOUR
OWN



BE INSPIRED. THE ONLY LIMIT IS YOUR IMAGINATION.

CREATE
YOUR
OWN

NOTE: PRODUCTS FEATURED ARE DESIGN IDEAS ONLY

RUGBY



NEWBURY HOOP



MONDRIAN



LASER



GAMMA

TECHNICAL INFORMATION:

Mizuno Drylite, Sublimation Polyester/Spandex Mix, Katana Neckline with FlexKnit Gusset, Binding Sublimation, Blind stitching seam construction, Body Fit.

SIZES:

Mens S-4XL

MATERIAL:

- Fabric: 93% Polyester, 7% Spandex

COLOUR PALETTE:



CHOOSE
YOUR
OWN.

PRICE:



TECHNICAL INFORMATION:

Mizuno Drylite, Sublimation Woven 100% Polyester Twill, Flat Lock Draw Chord, Inner Grip Waist Band, Gusset.

SIZES:

Mens S-4XL Jnr Y6 - YXS

MATERIAL:

- Fabric: 100% Polyester

COLOUR PALETTE:



CHOOSE
YOUR
OWN.

PRICE:



TECHNICAL INFORMATION:

Durable Nylon/Polyester/Elastane blended yarn knit construction of knee high double welted sock, with reinforced heel & toe and half cushioned foot offering superior comfort and comfortable wear, moisture management technology keeps the foot dry.

SIZES:

Unisex S-XL

MATERIAL:

- Fabric: 85% Nylon, 12% Elastane, 3% Polyester

COLOUR PALETTE:



PRICE:



USE OUR 3D KIT
DESIGNER @
[MIZUNO.CO.UK](https://mizuno.co.uk)

IKUNO TIGHT FIT SHIRT

T55FS000

CREATE
YOUR
OWN



UMEDA SHORT

R2EB4A01 / R2EB4B01



RUGBY SOCK

R2EX3W1

CREATE
YOUR
OWN



BE INSPIRED. THE ONLY LIMIT IS YOUR IMAGINATION.

NOTE: PRODUCTS FEATURED ARE DESIGN IDEAS ONLY



GENTLEMAN



COUNTY



STINGER



ISLANDERS

TECHNICAL INFORMATION:

Mizuno Drylite, Sublimation Polyester/Spandex Mix, Ikuno Neckline, Blind stitching seam construction.

SIZES:

Mens S-4XL

MATERIAL:

- Fabric: 93% Polyester, 7% Spandex

COLOUR PALETTE:



CHOOSE
YOUR
OWN.

PRICE:



TECHNICAL INFORMATION:

Mizuno Drylite, Woven 100% Polyester, Flat Lock Draw Chord, Inner Grip Waist Band, Gusset

SIZES:

Mens S-4XL Jnr Y6 - YXS

MATERIAL:

- Fabric: 100% Polyester

COLOUR PALETTE:



PRICE:



TECHNICAL INFORMATION:

Durable Nylon/Polyester/Elastane blended yarn knit construction of knee high double welted sock, with reinforced heel & toe and half cushioned foot offering superior comfort and comfortable wear, moisture management technology keeps the foot dry.

SIZES:

Unisex S-XL

MATERIAL:

- Fabric: 85% Nylon, 12% Elastane, 3% Polyester

COLOUR PALETTE:



PRICE:



USE OUR 3D KIT
DESIGNER @
[MIZUNO.CO.UK](https://mizuno.co.uk)

KATANA STANDARD SUB SHIRT

K55SS000 / JK55SS000
L/S Available LK55SS000 / LJK55SS000

CREATE
YOUR
OWN



ELITE SHORT

55ES000 / J55ES000

CREATE
YOUR
OWN



RUGBY SOCK

R2EX3W1

CREATE
YOUR
OWN



BE INSPIRED. THE ONLY LIMIT IS YOUR IMAGINATION.

CREATE
YOUR
OWN

RUGBY

NOTE: PRODUCTS FEATURED ARE DESIGN IDEAS ONLY



CHEVRON



ADDER



PRISM



REGAL

TECHNICAL INFORMATION:

Mizuno Drylite, Sublimation 100% Polyester , Katana Neckline with FlexKnit Gusset, Blind stitching seam construction, Standard Fit.

SIZES:

Mens S-4XL Jnr Y6 - YXS

MATERIAL:

- Fabric: 100% Polyester

COLOUR PALETTE:



CHOOSE
YOUR
OWN.

PRICE:



TECHNICAL INFORMATION:

Mizuno Drylite 100% Polyester Drill, Flat Lock Draw Chord, Inner Grip Waist Band, Piping, Stretch side panels & Gusset.

SIZES:

Mens S-4XL Jnr Y6 - YXS

MATERIAL:

- Fabric: 100% Polyester

COLOUR PALETTE:



PRICE:



TECHNICAL INFORMATION:

Durable Nylon/Polyester/Elastane blended yarn knit construction of knee high double welted sock, with reinforced heel & toe and half cushioned foot offering superior comfort and comfortable wear, moisture management technology keeps the foot dry.

SIZES:

Unisex S-XL

MATERIAL:

- Fabric: 85% Nylon, 12% Elastane, 3% Polyester

COLOUR PALETTE:



PRICE:



USE OUR 3D KIT
DESIGNER @
[MIZUNO.CO.UK](https://www.mizuno.co.uk)

SHURIKEN STANDARD SUB SHIRT

S55SS000 / JS55SS000
L/S Available LS55SS000 / LJS55SS000

CREATE
YOUR
OWN



NANIWA SHORT

55GS000 / J55GS000

CREATE
YOUR
OWN



RUGBY SOCK

R2EX3W1

CREATE
YOUR
OWN



BE INSPIRED. THE ONLY LIMIT IS YOUR IMAGINATION.



BLUES



CLASSIC CHEST



SIDE HOOP



SLIDER

TECHNICAL INFORMATION:

Mizuno DryLite, Sublimation 100% Polyester Knitted, Shuriken Neckline, Blind stitching seam construction.

SIZES:

Mens S-4XL Jnr Y6 - YXS

MATERIAL:

- Fabric: 100% Polyester

COLOUR PALETTE:



CHOOSE
YOUR
OWN.

PRICE:



TECHNICAL INFORMATION:

Mizuno DryLite, Woven Drill fabric in a durable game short styling with supported seams, elasticated waistband with flat drawstring.

SIZES:

Mens S-4XL Jnr Y6 - YXS

MATERIAL:

- Fabric: 100% Polyester

COLOUR PALETTE:



PRICE:



TECHNICAL INFORMATION:

Durable Nylon/Polyester/Elastane blended yarn knit construction of knee high double welted sock, with reinforced heel & toe and half cushioned foot offering superior comfort and comfortable wear, moisture management technology keeps the foot dry.

SIZES:

Unisex S-XL

MATERIAL:

- Fabric: 85% Nylon, 12% Elastane, 3% Polyester

COLOUR PALETTE:



PRICE:



USE OUR 3D KIT
DESIGNER @
[MIZUNO.CO.UK](https://www.mizuno.co.uk)

SHURIKEN CUT & SEW SHIRT

S55SC000 / JS55SC000
L/S Available LS55SC000 / LJS55SC000

CREATE
YOUR
OWN



GAME SHORT

B55GS000 / JB55GS000



RUGBY SOCK

R2EX3W1

CREATE
YOUR
OWN



BE INSPIRED. THE ONLY LIMIT IS YOUR IMAGINATION.

CREATE
YOUR
OWN

RUGBY

NOTE: PRODUCTS FEATURED ARE DESIGN IDEAS ONLY



TECHNICAL INFORMATION:

Mizuno DryLite 100% Polyester Knitted , Shuriken Neckline, Blind stitching seam construction

SIZES:

Mens S-4XL Jnr Y6 - YXS

MATERIAL:

- Fabric: 100% Polyester

COLOUR PALETTE:



PRICE:



TECHNICAL INFORMATION:

Mizuno DryLite, Woven Drill fabric in a durable game short styling with supported seams, elasticated waistband with flat drawstring.

SIZES:

Mens S-4XL Jnr Y6 - YXS

MATERIAL:

- Fabric: 100% Cotton

COLOUR PALETTE:



PRICE:



TECHNICAL INFORMATION:

Durable Nylon/Polyester/Elastane blended yarn knit construction of knee high double welted sock, with reinforced heel & toe and half cushioned foot offering superior comfort and comfortable wear, moisture management technology keeps the foot dry.

SIZES:

Unisex S-XL

MATERIAL:

- Fabric: 85% Nylon, 12% Elastane, 3% Polyester

COLOUR PALETTE:



PRICE:

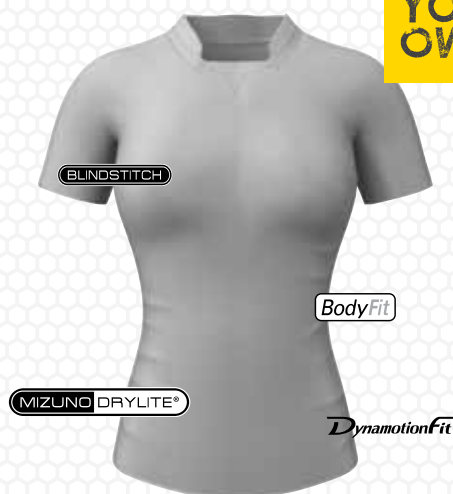


USE OUR 3D KIT
DESIGNER @
[MIZUNO.CO.UK](https://www.mizuno.co.uk)

WOMEN'S TIGHT FIT SHIRT

R2EA4C01

CREATE
YOUR
OWN



ELITE SHORT

55ES000

CREATE
YOUR
OWN



RUGBY SOCK

R2EX3W1

CREATE
YOUR
OWN



BE INSPIRED. THE ONLY LIMIT IS YOUR IMAGINATION.

NOTE: PRODUCTS FEATURED ARE DESIGN IDEAS ONLY



KOI



VENT



MONDRIAN



GAMMA

TECHNICAL INFORMATION:

Mizuno Drylite, Sublimation Polyester/Spandex Mix, Katana Neckline with FlexKnit Gusset, Binding Sublimation, Blind stitching seam construction, Body Fit.

SIZES:

Ladies S-2XL

MATERIAL:

- Fabric: 93% Polyester, 7% Spandex

COLOUR PALETTE:



CHOOSE
YOUR
OWN.

PRICE:



TECHNICAL INFORMATION:

Mizuno Drylite, Woven 100% Polyester, Flat Lock Draw Chord, Inner Grip Waist Band, Gusset

SIZES:

Adult S-2XL

MATERIAL:

- Fabric: 100% Polyester

COLOUR PALETTE:



PRICE:



TECHNICAL INFORMATION:

Durable Nylon/Polyester/Elastane blended yarn knit construction of knee high double welted sock, with reinforced heel & toe and half cushioned foot offering superior comfort and comfortable wear, moisture management technology keeps the foot dry.

SIZES:

Unisex S-XL

MATERIAL:

- Fabric: 85% Nylon, 12% Elastane, 3% Polyester

COLOUR PALETTE:



PRICE:



USE OUR 3D KIT
DESIGNER @
[MIZUNO.CO.UK](https://mizuno.co.uk)

WOMEN'S STANDARD FIT SHIRT

R2EA4C02 (Katana) R2EA4D01 (Shuriken)



CREATE
YOUR
OWN

Both Katana and Shuriken neck option available

NANIWA SHORT

55GS000 / J55GS000



CREATE
YOUR
OWN

RUGBY SOCK

R2EX3W1



CREATE
YOUR
OWN

BE INSPIRED. THE ONLY LIMIT IS YOUR IMAGINATION.

CREATE
YOUR
OWN

RUGBY

NOTE: PRODUCTS FEATURED ARE DESIGN IDEAS ONLY



COLLEGE



MANIAC



ZEBRA



JOSEPH

TECHNICAL INFORMATION:

Mizuno DryLite Sublimation 100% Polyester, Shuriken Neckline, Binding Sublimation, Blind stitching seam construction, Body Fit.

SIZES:

Ladies S-2XL

MATERIAL:

- Fabric: 100% Polyester

COLOUR PALETTE:



CHOOSE
YOUR
OWN.

PRICE:



TECHNICAL INFORMATION:

Mizuno DryLite, Woven Drill fabric in a durable game short styling with supported seams, elasticated waistband with flat drawstring.

SIZES:

Mens S-4XL Jnr Y6 - YXS

MATERIAL:

- Fabric: 100% Polyester

COLOUR PALETTE:



PRICE:



TECHNICAL INFORMATION:

Durable Nylon/Polyester/Elastane blended yarn knit construction of knee high double welted sock, with reinforced heel & toe and half cushioned foot offering superior comfort and comfortable wear, moisture management technology keeps the foot dry.

SIZES:

Unisex S-XL

MATERIAL:

- Fabric: 85% Nylon, 12% Elastane, 3% Polyester

COLOUR PALETTE:



PRICE:





CREATE
YOUR
OWN

NETBALL

Unleash your inner designer and take your team to the next level
with Mizuno netball clothing that looks good and feels amazing.

AUTHENTIC, JAPANESE, INNOVATION.

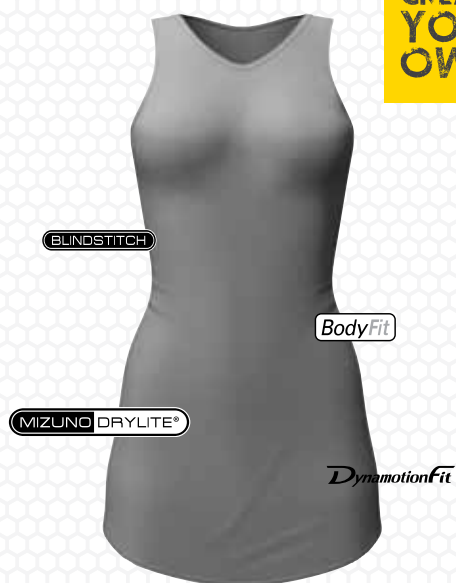


USE OUR 3D KIT
DESIGNER @
[MIZUNO.CO.UK](https://mizuno.co.uk)

NAMBA SUB DRESS

55TF017 / J55TF017 (Round Neck)
32EA4C06 / 32EA4D06 (V Neck)

CREATE
YOUR
OWN



Long length option available

ABENO SUB KNICKER

32EB4C08 / 32EB4D08

CREATE
YOUR
OWN



ANKLE SOCK

R2EX3X2

CREATE
YOUR
OWN



BE INSPIRED. THE ONLY LIMIT IS YOUR IMAGINATION.



ROYALS



PRISM



VENT



CHARGE

TECHNICAL INFORMATION:

Mizuno DryLite, Sublimation Polyester, Stretch fabric with spandex for added comfort, Blindstitch, Velcro front and back for player positions, Body Fit.

SIZES:

WOMEN'S S-2XL Jnr Y6-YXS

MATERIAL:

- Fabric: 93% Polyester, 7% Spandex

COLOUR PALETTE:



CHOOSE
YOUR
OWN.

PRICE:



TECHNICAL INFORMATION:

Mizuno DryLite, Polyester, Stretch fabric with spandex for added comfort, Blindstitch, Elasticated Waistband, Gusset, Body Fit.

SIZES:

WOMEN'S S-2XL Jnr Y6-YXS

MATERIAL:

- Fabric: 92% Polyester, 8% Spandex

COLOUR PALETTE:



CHOOSE
YOUR
OWN.

PRICE:



TECHNICAL INFORMATION:

A Cotton rich low cut ankle sock, with reinforced heel & toe and half cushioned foot offers superior comfort and comfortable wear, moisture management technology keeps the foot dry.

SIZES:

Unisex S-XL

MATERIAL:

- Fabric: 80% Cotton, 12% Elastane
5% Nylon, 3% Polyester

COLOUR PALETTE:



PRICE:

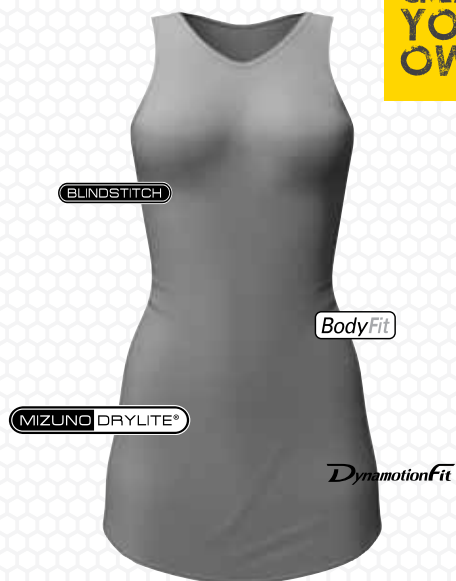


USE OUR 3D KIT
DESIGNER @
[MIZUNO.CO.UK](https://mizuno.co.uk)

NAMBA CUT & SEW DRESS

55TF018 / J55TF018 (Round Neck)
32EA4C05 / 32EA4D05 (V Neck)

CREATE
YOUR
OWN



Long length option available

ABENO KNICKER

32EB4C09 / 32EB4D09

CREATE
YOUR
OWN



ANKLE SOCK

R2EX3X2

CREATE
YOUR
OWN



BE INSPIRED. THE ONLY LIMIT IS YOUR IMAGINATION.

CREATE
YOUR
OWN

NETBALL

NOTE: PRODUCTS FEATURED ARE DESIGN IDEAS ONLY



TECHNICAL INFORMATION:

Mizuno Drylite, Nylon, Stretch fabric with spandex for added comfort, Blindstitch, Velcro front and back for player positions, Body Fit.

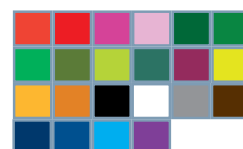
SIZES:

WOMEN'S S-2XL Jnr Y6-YXS

MATERIAL:

- Fabric: 82% Nylon, 18% Spandex

COLOUR PALETTE:



PRICE:



TECHNICAL INFORMATION:

Mizuno DryLite, Polyester, Stretch fabric with spandex for added comfort, Blindstitch, Elasticated Waistband, Gusset, Body Fit.

SIZES:

WOMEN'S S-2XL Jnr Y6-YXS

MATERIAL:

- Fabric: 92% Polyester, 8% Spandex

COLOUR PALETTE:



PRICE:



TECHNICAL INFORMATION:

A Cotton rich low cut ankle sock, with reinforced heel & toe and half cushioned foot offers superior comfort and comfortable wear, moisture management technology keeps the foot dry.

SIZES:

Unisex S-XL

MATERIAL:

- Fabric: 80% Cotton, 12% Elastane
5% Nylon, 3% Polyester

COLOUR PALETTE:



PRICE:



USE OUR 3D KIT
DESIGNER @
[MIZUNO.CO.UK](https://mizuno.co.uk)

MINATO TOP

32EA4C07 / 32EA4D07

CREATE
YOUR
OWN



MINATO SKORT

W55NS000 / JW55NS000

CREATE
YOUR
OWN



ANKLE SOCK

R2EX3X2

CREATE
YOUR
OWN



BE INSPIRED. THE ONLY LIMIT IS YOUR IMAGINATION.

CREATE
YOUR
OWN

NETBALL

NOTE: PRODUCTS FEATURED ARE DESIGN IDEAS ONLY



TECHNICAL INFORMATION:

Mizuno DryLite, Polyester, Blindstitch, V-Neck, Velcro front and back for player positions, Body Fit.

SIZES:

WOMEN'S S-2XL Jnr Y6-YXS

MATERIAL:

- Fabric: 100% Polyester

COLOUR PALETTE:



PRICE:



TECHNICAL INFORMATION:

Mizuno DryLite, Polyester, Blindstitch, Performance base layer Outer Skirt and under short, Mizuno Logo at Left hip, Body Fit.

SIZES:

WOMEN'S S-2XL Jnr Y6-YXS

MATERIAL:

- Skirt Fabric : 100% Polyester
- Knicker Fabric : 92% Polyester, 8% Spandex

COLOUR PALETTE:



PRICE:



TECHNICAL INFORMATION:

A Cotton rich low cut ankle sock , with reinforced heel & toe and half cushioned foot offers superior comfort and comfortable wear, moisture management technology keeps the foot dry.

SIZES:

Unisex S-XL

MATERIAL:

- Fabric: 80% Cotton, 12% Elastane 5% Nylon, 3% Polyester

COLOUR PALETTE:



PRICE:

SLIP OVER BIBS

32EA4C14



TECHNICAL INFORMATION:

Lightweight Polyester Slip Over Netball Bibs,
Full sets 7 colours, Team Positions display
with Mizuno logo and Japanese kanji on the
front and back.

SIZES:

ONE SIZE

MATERIAL:

- Fabric: 100% Polyester

COLOUR PALETTE:



CHOOSE
YOUR
OWN.

PRICE:

DRESS / TOP BIBS

BIB000



TECHNICAL INFORMATION:

Lightweight Polyester Netball Bibs, Full sets
7 colours, Team Positions display with
Mizuno logo and Japanese kanji on the front
and back.

SIZES:
ONE SIZE

MATERIAL:
• Fabric: 100% Polyester

COLOUR PALETTE:



CHOOSE
YOUR
OWN.

PRICE:







CREATE
YOUR
OWN

Let your imagination run riot so your team stands out from the crowd. Professional, quality clothing with over a 100 years of heritage, designed just the way you want it.

AUTHENTIC, JAPANESE, INNOVATION.



USE OUR 3D KIT
DESIGNER @
[MIZUNO.CO.UK](https://mizuno.co.uk)

PREMIUM POLO

55PP000 / J55PP000

CREATE
YOUR
OWN



Sublimated hockey polo also available

GYM SHORT WITH POCKETS

55SHP000 / J55SHP000

CREATE
YOUR
OWN



Sublimated hockey short also available

HOCKEY SOCK

R2EX3W3

CREATE
YOUR
OWN



BE INSPIRED. THE ONLY LIMIT IS YOUR IMAGINATION.

CREATE
YOUR
OWN



NOTE: PRODUCTS FEATURED ARE DESIGN IDEAS ONLY

TECHNICAL INFORMATION:

Mizuno DryLite, Performance fit of polyester knit short sleeve polo, self fabric collar, 2 buttons front placket, panels and piping design.

SIZES:

Mens S-4XL Jnr Y6 - YXS

MATERIAL:

- Fabric: 100% Polyester

COLOUR PALETTE:



PRICE:



TECHNICAL INFORMATION:

Mizuno DryLite, Lightweight durable fabric, Performance fitting with side panel and side pockets, elasticated waist band with flat drawstring.

SIZES:

Mens S-4XL Jnr Y6 - YXS

MATERIAL:

- Fabric: 100% Polyester

COLOUR PALETTE:



PRICE:



TECHNICAL INFORMATION:

Durable Nylon/Polyester/Elastane blended yarn knit construction of knee high double welted sock, with reinforced heel & toe and half cushioned foot offers superior comfort and comfortable wear, moisture management technology keeps the foot dry.

SIZES:

Unisex S-XL

MATERIAL:

- Fabric: 85% nylon, 12% Elastane, 3% Polyester

COLOUR PALETTE:



PRICE:

HOCKEY



USE OUR 3D KIT
DESIGNER @
MIZUNO.CO.UK

PREMIUM TEE

55PT000 / J55PT000

CREATE
YOUR
OWN



Sublimated hockey tee also available

TAKESHI SHORT

32EB4A01 / 32EB4B01

CREATE
YOUR
OWN



Sublimated hockey short also available

HOCKEY SOCK

R2EX3W3

CREATE
YOUR
OWN



BE INSPIRED. THE ONLY LIMIT IS YOUR IMAGINATION.

CREATE
YOUR
OWN

HOCKEY

NOTE: PRODUCTS FEATURED ARE DESIGN IDEAS ONLY



TECHNICAL INFORMATION:

Mizuno DryLite, Performance fit of polyester knit short sleeve Tee, panels and piping design.

SIZES:

Mens S-4XL Jnr Y6 - YXS

MATERIAL:

- Fabric: 100% Polyester

COLOUR PALETTE:



PRICE:



TECHNICAL INFORMATION:

Mizuno DryLite, Lightweight durable fabric, Performance fitting with side panel and side pockets, elasticated waist band with flat drawstring.

SIZES:

Mens S-4XL Jnr Y6 - YXS

MATERIAL:

- Fabric: 100% Polyester

COLOUR PALETTE:



PRICE:



TECHNICAL INFORMATION:

Durable Nylon/Polyester/Elastane blended yarn knit construction of knee high double welted sock, with reinforced heel & toe and half cushioned foot offers superior comfort and comfortable wear, moisture management technology keeps the foot dry.

SIZES:

Unisex S-XL

MATERIAL:

- Fabric: 85% Nylon, 12% Elastane, 3% Polyester

COLOUR PALETTE:



PRICE:



USE OUR 3D KIT
DESIGNER @
MIZUNO.CO.UK

PREMIUM POLO

55EF005

CREATE
YOUR
OWN



Sublimated hockey polo also available

MINATO SKORT

W55NS000 / JW55NS000

CREATE
YOUR
OWN



Sublimated hockey skort also available

HOCKEY SOCK

R2EX3W3

CREATE
YOUR
OWN



BE INSPIRED. THE ONLY LIMIT IS YOUR IMAGINATION.

CREATE
YOUR
OWN

HOCKEY

NOTE: PRODUCTS FEATURED ARE DESIGN IDEAS ONLY



TECHNICAL INFORMATION:

Mizuno DryLite, Performance fit of polyester knit short sleeve polo, self fabric collar, 2 buttons front placket, panels and piping design.

SIZES:

WOMEN'S S-2XL

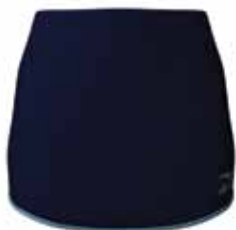
MATERIAL:

- Fabric: 100% Polyester

COLOUR PALETTE:



PRICE:



TECHNICAL INFORMATION:

Mizuno DryLite, Polyester, Blind Stitch, Performance baselayer outer skirt and under short, Mizuno logo at left hip, body fit.

SIZES:

WOMEN'S S-2XL Jnr Y6-YXS

MATERIAL:

- Skirt Fabric : 100% Polyester
- Knicker Fabric : 92% Polyester, 8% Spandex

COLOUR PALETTE:



PRICE:



TECHNICAL INFORMATION:

Durable Nylon/Polyester/Elastane blended yarn knit construction of knee high double welted sock, with reinforced heel & toe and half cushioned foot offers superior comfort and comfortable wear, moisture management technology keeps the foot dry.

SIZES:

Unisex S-XL

MATERIAL:

- Fabric: 85% Nylon, 12% Elastane, 3% Polyester

COLOUR PALETTE:



PRICE:



USE OUR 3D KIT
DESIGNER @
[MIZUNO.CO.UK](https://mizuno.co.uk)

PREMIUM TEE

55TF015

CREATE
YOUR
OWN



Sublimated hockey tee also available

MINATO SKORT

W55NS000 / JW55NS000

CREATE
YOUR
OWN



Sublimated hockey skort also available

HOCKEY SOCK

R2EX3W3

CREATE
YOUR
OWN



BE INSPIRED. THE ONLY LIMIT IS YOUR IMAGINATION.

CREATE
YOUR
OWN

HOCKEY

NOTE: PRODUCTS FEATURED ARE DESIGN IDEAS ONLY



TECHNICAL INFORMATION:

Mizuno DryLite, Performance fit of polyester knit short sleeve Tee, panels and piping design.

SIZES:

WOMEN'S S-2XL

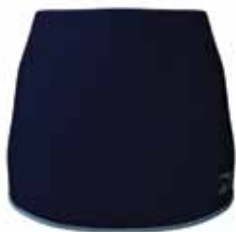
MATERIAL:

- Fabric: 100% Polyester

COLOUR PALETTE:



PRICE:



TECHNICAL INFORMATION:

Mizuno DryLite, Polyester, Blind Stitch, Performance baselayer outer skirt and under short, Mizuno logo at left hip, body fit.

SIZES:

WOMEN'S S-2XL Jnr Y6-YXS

MATERIAL:

- Skirt Fabric : 100% Polyester
- Knicker Fabric : 92% Polyester, 8% Spandex

COLOUR PALETTE:



PRICE:



TECHNICAL INFORMATION:

Durable Nylon/Polyester/Elastane blended yarn knit construction of knee high double welted sock, with reinforced heel & toe and half cushioned foot offers superior comfort and comfortable wear, moisture management technology keeps the foot dry.

SIZES:

Unisex S-XL

MATERIAL:

- Fabric: 85% Nylon, 12% Elastane, 3% Polyester

COLOUR PALETTE:



PRICE:

TAISHO SHORT SLEEVE SHIRT

X2EA4A02 / X2EA4B02

3/4 Sleeve Available X2EA4A01 / X2EA4B01



TECHNICAL INFORMATION:

Mizuno DryLite, Classic fit with breathable Polyester Knitted Fabric, Short sleeve design, self fabric collar, contrast self fabric neck tape, 3 button front placket.

SIZES:

Mens S-4XL Jnr Y6 - YXS

MATERIAL:

- Fabric: 100% Polyester

COLOUR PALETTE:



PRICE:

TAISHO TROUSERS

X2EB4A01 / X2EB4B01



TECHNICAL INFORMATION:

Mizuno DryLite, Classic fit with breathable Polyester Pique Mesh, Knitted Fabric, Elasticated waistband, flat drawstring. Side pockets.

SIZES:

Mens S-4XL Jnr Y6 - YXS

MATERIAL:

- Fabric: 100% Polyester

COLOUR PALETTE:



PRICE:

TAISHO JUMPER

X2EC4A03 / X2EC4B03

Sleeveless Jumper Available X2EC4A04 / X2EC4B04



TECHNICAL INFORMATION:

Mizuno Warmalite, Classic fit with breathable polyester knitted fabric, Micro fleece lining, Long Sleeve, V-neckline with ribbing, Hems and sleeves finished with Ribbing.

SIZES:

Mens S-4XL Jnr Y6 - YXS

MATERIAL:

- Fabric: 100% Polyester

COLOUR PALETTE:



PRICE:

TAISHO 20/20 SHIRT

X2EA4A03 / X2EA4B03



TECHNICAL INFORMATION:

Mizuno DryLite, Classic fit with breathable Polyester Knitted Fabric, 3/4 sleeve design, self fabric collar, contrast self fabric neck tape, 3 button front placket.

SIZES:

Mens S-4XL Jnr Y6 - YXS

MATERIAL:

• Fabric: 100% Polyester

COLOUR PALETTE:



**CHOOSE
YOUR
OWN.**

PRICE:

TAISHO SUB TROUSERS

X2EB4A02 / X2EB4B02



TECHNICAL INFORMATION:

Mizuno DryLite, Sublimite Classic fit with breathable Polyester Pique Mesh, Knitted Fabric, Elasticated waistband, Side pockets.

SIZES:

Mens S-4XL Jnr Y6 - YXS

MATERIAL:

• Fabric: 100% Polyester

COLOUR PALETTE:



**CHOOSE
YOUR
OWN.**

PRICE:

TAISHO SUB JUMPER

X2EC4A02 / X2EC4B02

Sleeveless Jumper Available X2EC4A01 / X2EC4B01



TECHNICAL INFORMATION:

Mizuno Warmalite, Sublimation Classic fit with breathable polyester knitted fabric, Micro fleece lining, Long Sleeve with Rib Cuffs, V-neckline with ribbing, Hems and sleeves finished with Ribbing.

SIZES:

Mens S-4XL Jnr Y6 - YXS

MATERIAL:

• Fabric: 100% Polyester

COLOUR PALETTE:



**CHOOSE
YOUR
OWN.**

PRICE:

YODOGAWA R SUB SHIRT

P2EA4A04 / P2EA4B04

L/S Available P2EA4A02 / P2EA4B02



TECHNICAL INFORMATION:

Mizuno DryLite, Game fit with breathab polyester knitted fabric , Short sleeve, f neckline , Front panel sub.

SIZES:

Mens S-4XL Jnr Y6 - YXS

MATERIAL:

• Fabric: 100% Polyester

COLOUR PALETTE:



CHOOSE
YOUR
OWN.

PRICE:

YODOGAWA V SUB SHIRT

P2EA4A03 / P2EA4B03

L/S Available P2EA4A01 / P2EA4B01



TECHNICAL INFORMATION:

Mizuno DryLite, Game fit with breathab polyester knitted fabric , Short sleeve, V-neckline , Front panel sub.

SIZES:

Mens S-4XL Jnr Y6 - YXS

MATERIAL:

• Fabric: 100% Polyester

COLOUR PALETTE:



CHOOSE
YOUR
OWN.

PRICE:

YODOGAWA SUB SHORT

P2EB4A03 / P2EB4B03



TECHNICAL INFORMATION:

Mizuno DryLite, Sublimation Game fit with breathable Polyester knitted fabric, Side pocket Elasticated waistband with flat drawstring.

SIZES:

Mens S-4XL Jnr Y6 - YXS

MATERIAL:

• Fabric: 100% Polyester

COLOUR PALETTE:



CHOOSE
YOUR
OWN.

PRICE:

YODOGAWA CUT & SEW SHORT

P2EB4A01 / P2EB4B01



TECHNICAL INFORMATION:

Mizuno DryLite, Cut & Sew Game fit with breathable Polyester knitted fabric, Side pocket Elasticated waistband with flat drawstring.

SIZES:

Mens S-4XL Jnr Y6 - YXS

MATERIAL:

- Fabric: 100% Polyester

COLOUR PALETTE:



PRICE:

HIGASHI GK SHIRT

P2EA4A05 / P2EA4B05



TECHNICAL INFORMATION:

Mizuno DryLite, Game fit with breathable polyester knitted fabric, Long sleeve, V-neckline, ribbing on cuffs.

SIZES:

Mens S-4XL Jnr Y6 - YXS

MATERIAL:

- Fabric: 100% Polyester

COLOUR PALETTE:



CHOOSE
YOUR
OWN.

PRICE:

HIGASHI GK SHORT

P2EB4A02 / P2EB4B02



TECHNICAL INFORMATION:

Mizuno DryLite, Sublimation Game fit with breathable Polyester knitted fabric, Side pocket Elasticated waistband with flat drawstring.

SIZES:

Mens S-4XL Jnr Y6 - YXS

MATERIAL:

- Fabric: 100% Polyester

COLOUR PALETTE:



CHOOSE
YOUR
OWN.

PRICE:

MINATO R/N SHIRT

W2EA4A01 / W2EA4B01



TECHNICAL INFORMATION:

Mizuno DryLite, Sublimation Polyester Micro Mesh, Lightweight Performance Jersey, Blindstitch, Embroidered Mizuno Logo, Round Neck, Rib-Knit and arm holes, Hemmed Bottom.

SIZES:

Mens S-4XL Jnr Y6 - YXS

MATERIAL:

• Fabric: 100% Polyester

COLOUR PALETTE:



CHOOSE
YOUR
OWN.

PRICE:

MINATO V/N SHIRT

W2EA4A02 / W2EA4B02



TECHNICAL INFORMATION:

Mizuno DryLite, Sublimation Polyester Micro Mesh, Lightweight Performance Jersey, Blindstitch, Embroidered Mizuno Logo, V Neck, Rib-Knit and arm holes, Hemmed Bottom.

SIZES:

Mens S-4XL Jnr Y6 - YXS

MATERIAL:

• Fabric: 100% Polyester

COLOUR PALETTE:



CHOOSE
YOUR
OWN.

PRICE:

NISHI SHORT

W2EB4A01 / W2EB4B01



TECHNICAL INFORMATION:

Mizuno DryLite, Sublimation Polyester, Blindstitch, Elasticated Waistband, Side panel.

SIZES:

Mens S-4XL Jnr Y6 - YXS

MATERIAL:

• Fabric: 100% Polyester

COLOUR PALETTE:



CHOOSE
YOUR
OWN.

PRICE:

WOMEN'S MINATO R/N SHIRT

W2EA4C01



TECHNICAL INFORMATION:

Mizuno DryLite, Sublimation Polyester Micro Mesh, Lightweight Performance Jersey, Blindstitch, Embroidered Mizuno Logo, Round Neck, Rib-Knit and arm holes, Hemmed Bottom.

SIZES:

WOMEN'S S-2XL

MATERIAL:

- Fabric: 100% Polyester

COLOUR PALETTE:



CHOOSE
YOUR
OWN.

PRICE:

WOMEN'S MINATO V/N SHIRT

W2EA4C02



TECHNICAL INFORMATION:

Mizuno DryLite, Sublimation Polyester Micro Mesh, Lightweight Performance Jersey, Blindstitch, Embroidered Mizuno Logo, V Neck, Rib-Knit and arm holes, Hemmed Bottom.

SIZES:

Mens S-4XL Jnr Y6 - YXS

MATERIAL:

- Fabric: 100% Polyester

COLOUR PALETTE:



CHOOSE
YOUR
OWN.

PRICE:

WOMEN'S NISHI SHORT

W2EB4C01



TECHNICAL INFORMATION:

Mizuno DryLite, Sublimation Polyester, Blindstitch, Elasticated Waistband, Side panel.

SIZES:

Mens S-4XL Jnr Y6 - YXS

MATERIAL:

- Fabric: 100% Polyester

COLOUR PALETTE:



CHOOSE
YOUR
OWN.

PRICE:

COMPETITION TOP

55VT000 / J55VT000



TECHNICAL INFORMATION:

Mizuno DryLite, Performance fit of polyester Vest fit and cut, V-neck, self fabric neckline, panels and piping design.

SIZES:

Mens S-4XL Jnr Y6 - YXS

MATERIAL:

- Fabric: 100% Polyester

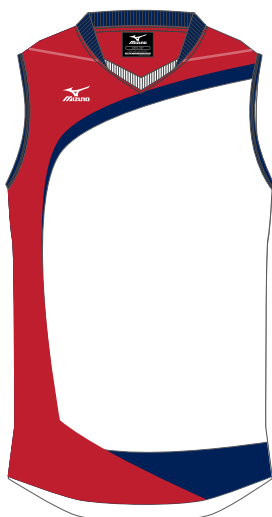
COLOUR PALETTE:



PRICE:

COMPETITION SUB TOP

55VTS000 / J55VTS000



TECHNICAL INFORMATION:

Mizuno DryLite, Performance fit of Sublimation polyester Vest fit and cut, V-neck, self fabric neckline, panels and piping design.

SIZES:

Mens S-4XL Jnr Y6 - YXS

MATERIAL:

- Fabric: 100% Polyester

COLOUR PALETTE:



PRICE:

COMPETITION SHORT

55SH000 / J55SH000



TECHNICAL INFORMATION:

Mizuno DryLite, Lightweight durable fabric, Performance fitting with side panel, elasticated waist band with flat drawstring.

SIZES:

Mens S-4XL Jnr Y6 - YXS

MATERIAL:

- Fabric: 100% Polyester

COLOUR PALETTE:



PRICE:

LADIES COMPETITION SUB VEST TOP

V2EA4C13



TECHNICAL INFORMATION:

Mizuno DryLite, Sublimation Polyester , Lightweight Performance Jersey, Blindstitch, Embroidered Mizuno Logo, V Neck, Rib-Knit and arm holes, Hemmed Bottom.

SIZES:

WOMEN'S S-2XL

MATERIAL:

- Fabric: 100% Polyester

COLOUR PALETTE:

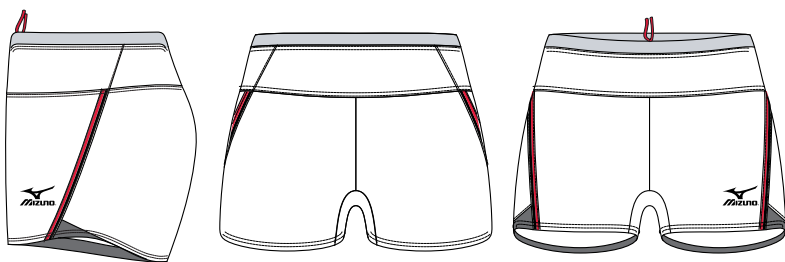


**CHOOSE
YOUR
OWN.**

PRICE:

LADIES COMPETITION SUB SHORT

V2EB4C13



TECHNICAL INFORMATION:

Mizuno DryLite, Polyester, Stretch fabric with spandex for added comfort, Blindstitch, Elasticated Waistband, Body Fit

SIZES:

WOMEN'S S-2XL

MATERIAL:

- Fabric: 100% Polyester

COLOUR PALETTE:

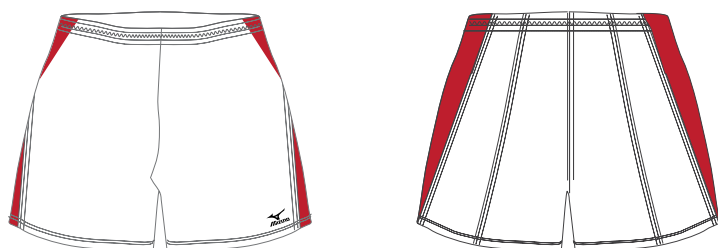


**CHOOSE
YOUR
OWN.**

PRICE:

LADIES COMPETITION SHORT

32EB4C23



TECHNICAL INFORMATION:

Mizuno DryLite, Lightweight durable fabric, Performance fitting with side panel, elasticated waist band with flat drawstring.

SIZES:

WOMEN'S S-2XL

MATERIAL:

- Fabric: 100% Polyester

COLOUR PALETTE:



PRICE:

KONOHANA SINGLET

U2EA4A01



TECHNICAL INFORMATION:

Mizuno DryLite, Sublimation Lightweight breathable Polyester Fabric, Sleeveless, Blindstitch, Performance fit.

SIZES:

Mens S-4XL

MATERIAL:

- Fabric: 100% Polyester

COLOUR PALETTE:

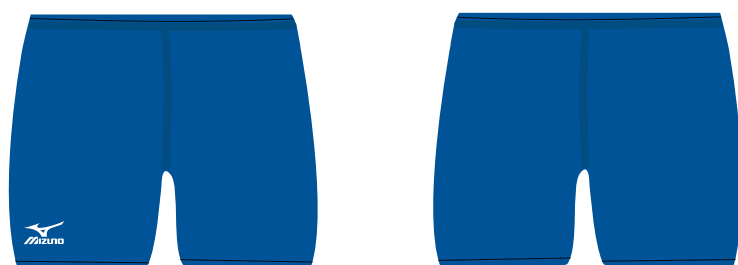


CHOOSE
YOUR
OWN.

PRICE:

KONOHANA TIGHT SHORT

U2EA4A02



TECHNICAL INFORMATION:

Mizuno DryLite, Sublimation Polyester, Stretch fabric with spandex for added comfort, Blindstitch, Elasticated Waistband, Professional Fit.

SIZES:

Mens S-4XL

MATERIAL:

- Fabric: 100% Polyester

COLOUR PALETTE:

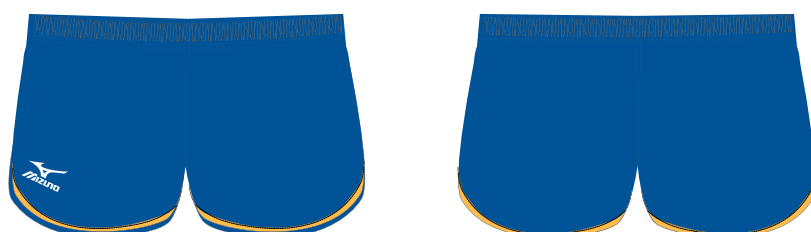


CHOOSE
YOUR
OWN.

PRICE:

KONOHANA SHORT

U2EA4A03



TECHNICAL INFORMATION:

Mizuno DryLite, Sublimation Lightweight durable fabric, Performance fitting.

SIZES:

Mens S-4XL

MATERIAL:

- Fabric: 100% Polyester

COLOUR PALETTE:



CHOOSE
YOUR
OWN.

PRICE:

WOMEN'S KONOHA SINGLET

U2EA4C01



TECHNICAL INFORMATION:

Mizuno DryLite, Sublimation Lightweight breathable Polyester Fabric, Sleeveless, Blindstitch, Performance fit.design.

SIZES:

WOMEN'S S-2XL

MATERIAL:

- Fabric: 100% Polyester

COLOUR PALETTE:

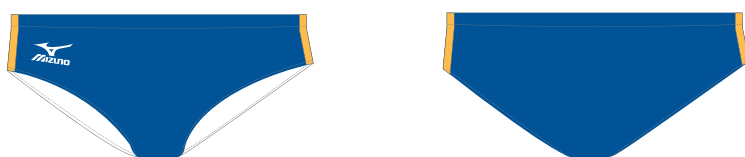


CHOOSE
YOUR
OWN.

PRICE:

WOMEN'S KONOHA KNICKER

U2EA4C02



TECHNICAL INFORMATION:

Mizuno DryLite, Sublimation Polyester, Stretch fabric with spandex for added comfort, Blindstitch, Elasticated Waistband, Professional Fit

SIZES:

WOMEN'S S-2XL

MATERIAL:

- Fabric: 100% Polyester

COLOUR PALETTE:

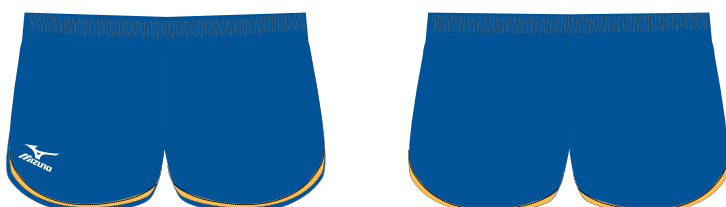


CHOOSE
YOUR
OWN.

PRICE:

WOMEN'S KONOHA SHORT

U2EA4C03



TECHNICAL INFORMATION:

Mizuno DryLite, Sublimation Lightweight durable fabric, Performance fitting.

SIZES:

WOMEN'S S-2XL

MATERIAL:

- Fabric: 100% Polyester

COLOUR PALETTE:



CHOOSE
YOUR
OWN.

PRICE:

SUMINOE CUT & SEW ALL IN ONE

K2EA4A08 / K2EA4C08



TECHNICAL INFORMATION:

Performance fit breathable 4 way stretch nylon, polyester, lycra mix. with flat lock stitching and double lined seat for comfort.

SIZES:

Mens XS-3XL Womans XS-2XL

MATERIAL:

- Fabric: 65% Nylon, 21% Polyester, 14% Lycra French Terry

COLOUR PALETTE:



PRICE:

SUMINOE CUT & SEW ALL IN ONE

K2EA4A09 / K2EA4C09



TECHNICAL INFORMATION:

Performance fit breathable 4 way stretch nylon, polyester, lycra mix. with flat lock stitching and double lined seat for comfort.

SIZES:

Mens XS-3XL Womans XS-2XL

MATERIAL:

- Fabric: 65% Nylon, 21% Polyester, 14% Lycra French Terry

COLOUR PALETTE:



PRICE:

SUMINOE CUT & SEW ALL IN ONE

K2EA4A10 / K2EA4C10



TECHNICAL INFORMATION:

Performance fit breathable 4 way stretch nylon, polyester, lycra mix. with flat lock stitching and double lined seat for comfort.

SIZES:

Mens XS-3XL Womans XS-2XL

MATERIAL:

- Fabric: 65% Nylon, 21% Polyester, 14% Lycra French Terry

COLOUR PALETTE:



PRICE:

SUMINOE SUB ALL IN ONE

K2EA4A05 / K2EA4C05



TECHNICAL INFORMATION:

Performance fit breathable 4 way stretch nylon, polyester, lycra mix. with flat lock stitching and double lined seat for comfort. Sublimation paneling allows variety in design.

SIZES:

Mens XS-3XL Womans XS-2XL

MATERIAL:

- Fabric: Body 65% Nylon, 21% Polyester, 14% Lycra French Terry, Trim 93% Polyester, 7% Spandex

COLOUR PALETTE:



CHOOSE YOUR OWN.

PRICE:

SUMINOE GILET

K2EE4A02 / K2EE4C02



TECHNICAL INFORMATION:

Performance fit Windproof & shower proof gilet with secure zip pocket.

SIZES:

Mens XS-3XL Womans XS-2XL

MATERIAL:

- Fabric: Body 65% Nylon, 21% Polyester, 14% Lycra French Terry, Trim 100% Polyester Bonded Fleece

COLOUR PALETTE:



PRICE:

SUMINOE SPLASH JACKET

K2EE4A01 / K2EE4B01



TECHNICAL INFORMATION:

Performance fit Windproof & splash proof, 1/4 Zip neck, scoop back, secure zipped pockets, mesh lined.

SIZES:

Mens XS-3XL Womans XS-2XL

MATERIAL:

- Fabric: Body 100% Nylon, Trim 100% Polyester Mesh

COLOUR PALETTE:



PRICE:

TENNOJI PERFORMANCE CYCLE JERSEY (FULL ZIP)

K2EA4A07



TECHNICAL INFORMATION:

Mizuno DryLite, sublimation Polyester with Spandex single Jersey, Knit Fabric, Polyester with Spandex mesh for added comfort and breathable design, Short Sleeve, Back Pockets, Full Zip, Performance Fit

SIZES:

Mens S-4XL

MATERIAL:

• Fabric: 100% Polyester

COLOUR PALETTE:

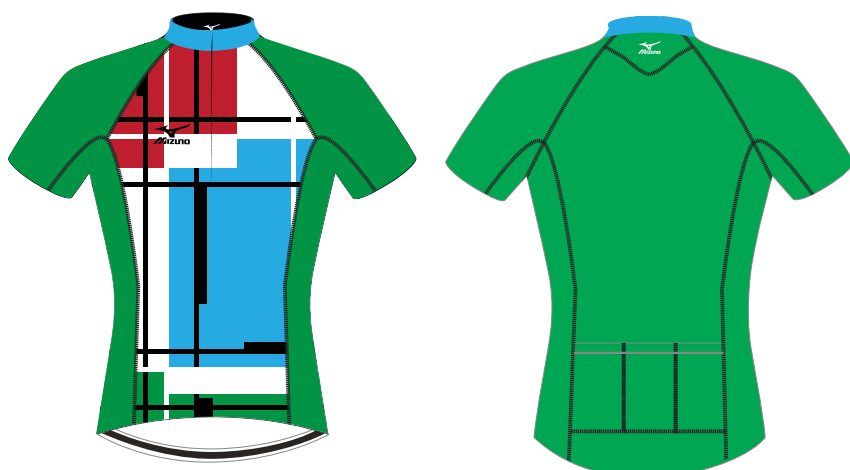


CHOOSE
YOUR
OWN.

PRICE:

TENNOJI CYCLE (1/4 ZIP)

K2EA4A06



TECHNICAL INFORMATION:

Mizuno DryLite, sublimation Polyester with Spandex single Jersey, Knit Fabric, Polyester with Spandex mesh for added comfort and breathable design, Short Sleeve, Back Pockets, 1/4 Zip, Performance Fit

SIZES:

Mens S-4XL

MATERIAL:

• Fabric: 100% Polyester

COLOUR PALETTE:



CHOOSE
YOUR
OWN.

PRICE:

TENNOJI CLUB CYCLE SHIRT

K2EA4A05



TECHNICAL INFORMATION:

Mizuno DryLite, sublimation Polyester Knit Fabric, Polyester with Spandex mesh for added comfort and breathable design, Short Sleeve, Back Pockets, 1/4 Zip, Standard Fit

SIZES:

Mens S-4XL

MATERIAL:

• Fabric: 100% Polyester

COLOUR PALETTE:



CHOOSE
YOUR
OWN.

PRICE:

TENNJOJI PERFORMANCE CYCLE VEST

K2EA4A08



TECHNICAL INFORMATION:

Mizuno DryLite, sublimation Polyester with Spandex single Jersey, Knit Fabric, Polyester with Spandex mesh for added comfort and breathable design, Sleeveless, Back Pockets, Full Zip, Performance Fit

SIZES:

Mens S-4XL

MATERIAL:

- Fabric: 100% Polyester

COLOUR PALETTE:

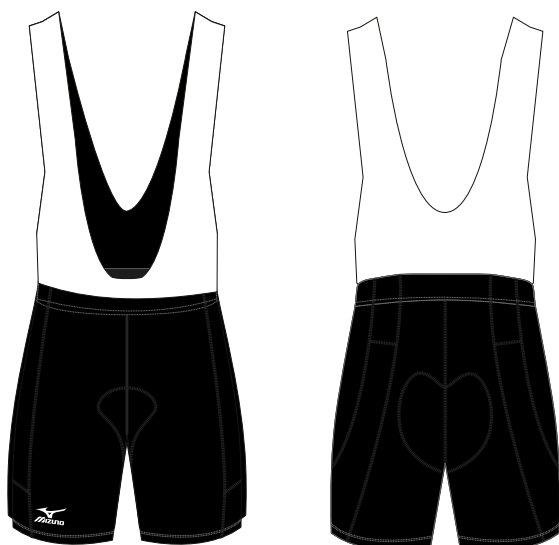


**CHOOSE
YOUR
OWN.**

PRICE:

TENNOJI BIB CYCLE SHORT

K2EB4A02



TECHNICAL INFORMATION:

Mizuno Drylite, sublimation polyester with spandex for added stretch, Breathable, Over shoulder straps for comfort, Athletic fit.

SIZES:

Mens S-4XL

MATERIAL:

- Fabric: 100% Polyester

COLOUR PALETTE:



**CHOOSE
YOUR
OWN.**

PRICE:

TENNOJI CLUB SHORTS

K2EB4A01



TECHNICAL INFORMATION:

Mizuno DryLite, sublimation Polyester with Spandex for added comfort and breathable design, Athletic Fit.

SIZES:

Mens S-4XL

MATERIAL:

- Fabric: 100% Polyester

COLOUR PALETTE:



**CHOOSE
YOUR
OWN.**

PRICE:





CREATE
YOUR
OWN

SOCKS

Finish your kit off with matching socks for the complete look.
Match any design.

AUTHENTIC, JAPANESE, INNOVATION.

RUGBY SOCK / HOCKEY SOCK

R2EX3W1 / R2EX3W3



MZ007



MZ017



MZ024



MZ013



MZ016



MZ005



MZ012



MZ002



MZ023



MZ001



MZ020



MZ004

RUGBY SOCK

TECHNICAL INFORMATION:

Durable Nylon/Polyester/Elastane blended yarn knit construction of knee high double welted sock, with reinforced heel & toe and half cushioned foot offering superior comfort and comfortable wear, moisture management technology keeps the foot dry

SIZES:

Unisex S-XL

MATERIAL:

- Fabric: 85% nylon 12% Elastane 3% Polyester

COLOUR PALETTE:



PRICE:

HOCKEY SOCK

TECHNICAL INFORMATION:

Durable Nylon/Polyester/Elastane blended yarn knit construction of knee high double welted sock, with reinforced heel & toe and half cushioned foot offering superior comfort and comfortable wear, moisture management technology keeps the foot dry

SIZES:

Unisex S-XL

MATERIAL:

- Fabric: 85% nylon 12% Elastane 3% Polyester

COLOUR PALETTE:



PRICE:

ANKLE SOCK

R2EX3X2



MZ010



MZ005



MZ001



MZ003



MZ002



MZ006

TECHNICAL INFORMATION:

A Cotton rich low cut ankle sock , with reinforced heel & toe and half cushioned foot offers superior comfort and comfortable wear, moisture management technology keeps the foot dry.

SIZES:

Unisex S-XL

MATERIAL:

- Fabric: 85% nylon 12% Elastane 3% Polyester

COLOUR PALETTE:



PRICE:

FOOTBALL SOCK

R2EX3W2



MZ007



MZ017



MZ024



MZ013



MZ016



MZ005

TECHNICAL INFORMATION:

Durable Nylon / Elastane / Polyester blended yarn knit construction of knee high single welted sock, with reinforced heel & toe and half cushioned foot. Offering superior comfort and comfortable wear, moisture management technology keeps the foot dry.

SIZES:

Unisex S-XL

MATERIAL:

- Fabric: 85% nylon 12% Elastane 3% Polyester

COLOUR PALETTE:



PRICE:





CREATE
YOUR
OWN

TRAINING

Keep that team identity when you train for professionalism and edge over your competition.

AUTHENTIC, JAPANESE, INNOVATION.

CLUB POLO

32EA4A04 / 32EA4B04



TECHNICAL INFORMATION:

Mizuno DryLite, Performance fit of polyester
Micro Mesh knit short sleeve polo, self fabric collar, 2 buttons front placket, panels and piping design.

SIZES:

Mens S-4XL Jnr Y6 - YXS

MATERIAL:

- Fabric: 100% Polyester

COLOUR PALETTE:



PRICE:

CLUB TEE

32EA4A03 / 32EA4B03



TECHNICAL INFORMATION:

Mizuno DryLite, Performance fit of polyester
Micro Mesh knit short sleeve Tee, self fabric collar, panels and piping design.

SIZES:

Mens S-4XL Jnr Y6 - YXS

MATERIAL:

- Fabric: 100% Polyester

COLOUR PALETTE:



PRICE:

PREMIUM POLO

55PP000 / J55PP000



TECHNICAL INFORMATION:

Mizuno DryLite, Performance fit of polyester
knit short sleeve polo, self fabric collar, 2 buttons front placket, panels and piping design.

SIZES:

Mens S-4XL Jnr Y6 - YXS

MATERIAL:

- Fabric: 100% Polyester

COLOUR PALETTE:



PRICE:

PREMIUM TEE

55PT000 / J55PT000



TECHNICAL INFORMATION:

Mizuno DryLite, Performance fit of polyester knit short sleeve Tee, panels and piping design.

SIZES:

Mens S-4XL Jnr Y6 - YXS

MATERIAL:

- Fabric: 100% Polyester

COLOUR PALETTE:



PRICE:

PREMIUM MUSCLE VEST

55VT000 / J55VT000



TECHNICAL INFORMATION:

Mizuno DryLite, Performance fit of polyester Vest fit and cut, V-neck, self fabric neckline, panels and piping design.

SIZES:

Mens S-4XL Jnr Y6 - YXS

MATERIAL:

- Fabric: 100% Polyester

COLOUR PALETTE:



PRICE:

PREMIUM MUSCLE VEST SUBLIMATE

55VTS000 / J55VTS000



TECHNICAL INFORMATION:

Mizuno DryLite, Performance fit of Sublimation polyester Vest fit and cut, V-neck, self fabric neckline, panels and piping design.

SIZES:

Mens S-4XL Jnr Y6 - YXS

MATERIAL:

- Fabric: 100% Polyester

COLOUR PALETTE:



PRICE:

GYM SHORT

55SH000 / J55SH000



TECHNICAL INFORMATION:

Mizuno DryLite, Lightweight durable fabric, Performance fitting with side panel, elasticated waist band with flat drawstring.

SIZES:

Mens S-4XL Jnr Y6 - YXS

MATERIAL:

- Fabric: 100% Polyester

COLOUR PALETTE:



PRICE:

TRACK PANT SINGLE COLOUR

55TP000 / J55TP000



TECHNICAL INFORMATION:

Mizuno ImpermaLite, Light weight performance fit of polyester woven track pant with side pocket, elasticated waist band with flat drawstring, inside leg zipper.

LEG LENGTHS:

Long Leg 55TPL000, Short Leg 55TPS000

SIZES:

Mens S-4XL Jnr Y6 - YXS

MATERIAL:

- Fabric: 100% Polyester

COLOUR PALETTE:



PRICE:

TSURUMI TRACK PANT

55TP100



TECHNICAL INFORMATION:

Mizuno ImpermaLite, Light weight performance fit of polyester woven track pant with side pocket, elasticated waist band with flat drawstring, inside leg zipper.

LEG LENGTHS:

Long Leg 55TPL100, Short Leg 55TPS100

SIZES:

Mens S-4XL

MATERIAL:

- Fabric: 100% Polyester

COLOUR PALETTE:



PRICE:

PRESENTATION TRACK PANT

32ED4A27 / 32ED4B27



TECHNICAL INFORMATION:

Mizuno ImpermaLite, Light weight performance fit of polyester woven track pant with side pocket, elasticated waist band with flat drawstring, inside leg zipper.

SIZES:

Mens S-4XL Jnr Y6 - YXS

MATERIAL:

- Fabric: 100% Polyester

COLOUR PALETTE:



PRICE:

PRESENTATION TRACK TOP 1/4 ZIP

32EC4A26 / 32EC4B26



TECHNICAL INFORMATION:

Mizuno ImpermaLite, Light weight performance fit of polyester woven track top with 1/4 body zip and side zip pocket.

SIZES:

Mens S-4XL Jnr Y6 - YXS

MATERIAL:

- Fabric: 100% Polyester

COLOUR PALETTE:



PRICE:

PRESENTATION TRACK TOP FULL ZIP

32EC4A25 / 32EC4B25



TECHNICAL INFORMATION:

Mizuno ImpermaLite, Light weight performance fit of polyester woven track top with full body zip and side zip pocket.

SIZES:

Mens S-4XL Jnr Y6 - YXS

MATERIAL:

- Fabric: 100% Polyester

COLOUR PALETTE:



PRICE:

TAISHO HOODED TOP

55HT000 / J55HT000



TECHNICAL INFORMATION:

Mizuno Warmalite brushed knit cotton/polyester fleece, pullover style with reinforced bar tacks, cotton rib waistband and cuffs, kangaroo style pocket, hood drawcord, performance fit.

SIZES:

Mens S-4XL Jnr Y6 - YXS

MATERIAL:

• Fabric: 60% Cotton, 40% Polyester

COLOUR PALETTE:



PRICE:

TSURUMI HOODED TOP

32EC4A15 / 32EC4B15



TECHNICAL INFORMATION:

Mizuno Warmalite brushed knit cotton/polyester fleece, pullover style with reinforced bar tacks, cut and sew design, cotton rib waistband and cuffs, kangaroo style pocket, hood drawcord, performance fit.

SIZES:

Mens S-4XL Jnr Y6 - YXS

MATERIAL:

• Fabric: 60% Cotton, 40% Polyester

COLOUR PALETTE:



PRICE:

TSURUMI FLEECE TOP

55FT000 / J55FT000



TECHNICAL INFORMATION:

Microfleece knit of 100% polyester, Performance fit, Full zipper length, Long sleeve with elastic cuffs, side pockets with zipper, elastic drawcord with toggle at hem.

Full zip fleece available:

55FJ000 / J55FJ000

SIZES:

Mens S-4XL Jnr Y6 - YXS

MATERIAL:

• Fabric: 100% Polyester

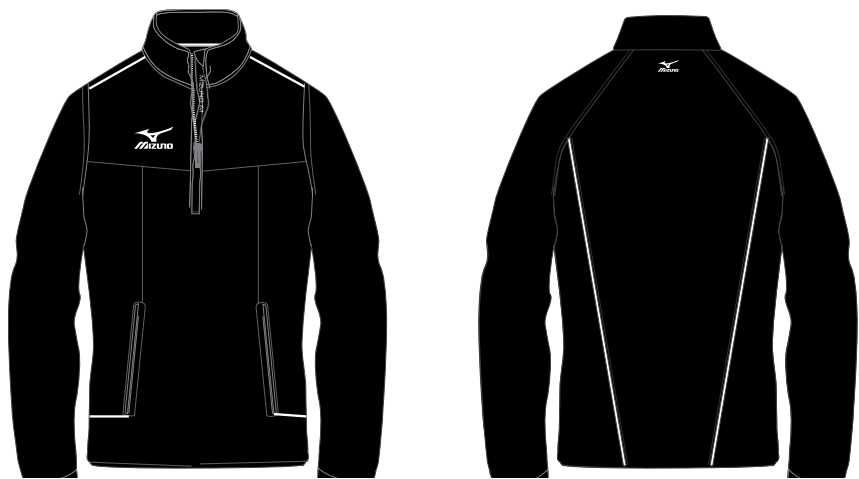
COLOUR PALETTE:



PRICE:

SOFT SHELL JACKET

32EE4A25 / 32EE4B25



TECHNICAL INFORMATION:

Breathable polyester, Stretch fabric with spandex for added comfort, Front mesh lining, Showerproof outer, Blindstitch, full length body zip, adjustable cuffs and hem, side pocket with zipper, performance fit.

SIZES:

Mens S-4XL Jnr Y6 - YXS

MATERIAL:

- Fabric: 85% Polyester, 15% Spandex

COLOUR PALETTE:



PRICE:

SIBERIAN GILET

32EE4A22



TECHNICAL INFORMATION:

Polyester outer shell with high quality dense padding, full length body zip, side pocket, performance fit.

SIZES:

Mens S-4XL

MATERIAL:

- Fabric: 100% Polyester

COLOUR PALETTE:



PRICE:

SIBERIAN PADDED JACKET

32EE4A21



TECHNICAL INFORMATION:

Polyester outer shell with high quality dense padding, full length body zip, side pocket cover with flap, rib under the straight sleeve, elastic drawcord with toggle and ring, performance fit.

SIZES:

Mens S-4XL

MATERIAL:

- Fabric: 100% Polyester

COLOUR PALETTE:



PRICE:

CLUB SPLASH JACKET

32EE4A28 / 32EEAB28



TECHNICAL INFORMATION:

Superior wind and water protection of 100% Nylon, performance fit, longer body length and lined for additional comfort, long sleeve with elastic cuffs.

SIZES:

Mens S-4XL Jnr Y6 - YX

MATERIAL:

- Fabric: 100% nylon

COLOUR PALETTE:



PRICE:

CLUB SPLASH PANTS

32EF4A24 / 32EF4B24



TECHNICAL INFORMATION:

Superior wind and water protection of 100% Nylon, performance fit with mesh lining, seamsealed, elasticated waistband with flat drawstring, side pocket with zipper.

SIZES:

Mens S-4XL Jnr Y6 - YXS

MATERIAL:

- Fabric: 100% nylon

COLOUR PALETTE:



PRICE:

PREMIUM CONTACT TOP

55PC000 / J55PC000



TECHNICAL INFORMATION:

Superior wind and water protection of 100% Nylon, performance fit longer body length and lined for additional comfort, long sleeve with elastic cuffs.

SIZES:

Mens S-4XL Jnr Y6 - YXS

MATERIAL:

- Fabric: 100% nylon

COLOUR PALETTE:



PRICE:

COACHES WET JACKET

55WT000 / J55WT000



TECHNICAL INFORMATION:

Superior wind and water protection of 100% Nylon, performance fit longer body length and lined for additional comfort, long sleeve with elastic cuffs, Full Zipper length, Side pockets with zipper, elastic drawcord with toggle at hem.

1/4 zip available:
55LJ000 / J55LJ000

SIZES:

Mens S-4XL Jnr Y6 - YXS

MATERIAL:

- Fabric: 100% nylon

COLOUR PALETTE:



PRICE:

BENCH COAT

32EE4A23



TECHNICAL INFORMATION:

Water shell fabric of 100% Nylon ripstop dobby with quilted lining, clipboard pouch, full length body zip, performance fit.

SIZES:

Mens S-4XL

MATERIAL:

- Fabric: 100% nylon

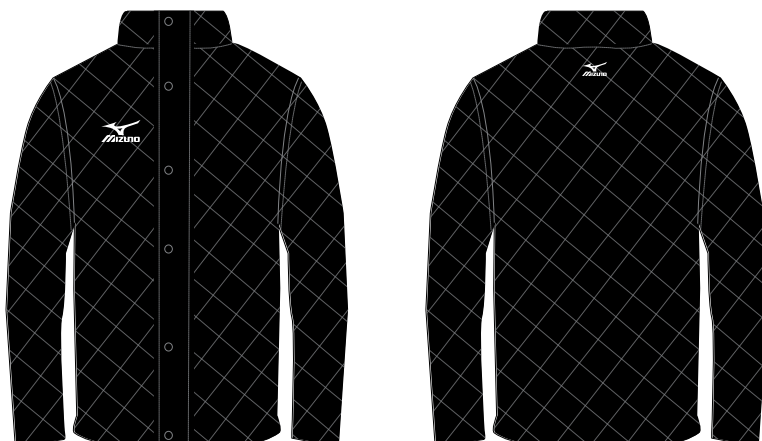
COLOUR PALETTE:



PRICE:

QUILTED JACKET

32EE4A24 / 32EE4B24



TECHNICAL INFORMATION:

Polyester outer shell with traditional diamond quilted pattern, full length body zip with self fabric cover, side pocket, press studs on front, performance fit.

SIZES:

Mens S-4XL Jnr Y6 - YXS

MATERIAL:

- Fabric: 100% nylon

COLOUR PALETTE:



PRICE:

CLUB POLO

32EA4C04



TECHNICAL INFORMATION:

Mizuno DryLite, Performance fit of polyester
Micro Mesh knit short sleeve polo, self
fabric collar, 2 buttons front placket, panels
and piping design.

SIZES:

WOMEN'S S - 2XL

MATERIAL:

• Fabric: 100% Polyester

COLOUR PALETTE:



PRICE:

CLUB TEE

32EA4C03



TECHNICAL INFORMATION:

Mizuno DryLite, Performance fit of polyester
Micro Mesh knit short sleeve Tee, self fabric
collar, panels and piping design.

SIZES:

WOMEN'S S - 2XL

MATERIAL:

• Fabric: 100% Polyester

COLOUR PALETTE:



PRICE:

PREMIUM GOLF POLO

55EF005



TECHNICAL INFORMATION:

Mizuno DryLite, Performance fit of polyester
knit short sleeve polo, self fabric collar, 2
buttons front placket, panels and piping
design.

SIZES:

WOMEN'S S - 2XL

MATERIAL:

• Fabric: 100% Polyester

COLOUR PALETTE:



PRICE:

PREMIUM TEE

55TF015



TECHNICAL INFORMATION:
Mizuno DryLite, Performance fit of polyester knit short sleeve Tee, panels and piping design.

SIZES:
WOMEN'S S - 2XL

MATERIAL:
• Fabric: 100% Polyester



PRICE:

PREMIUM CAPPED TEE

55TF016



TECHNICAL INFORMATION:
Mizuno DryLite, Performance fit of polyester knit Tee with Capped sleeve, panels and piping design.

SIZES:
WOMEN'S S - 2XL

MATERIAL:
• Fabric: 100% Polyester



PRICE:

PREMIUM CAPPED POLO

55EF006



TECHNICAL INFORMATION:
Mizuno DryLite, Performance fit of polyester knit Polo with Capped sleeve, self fabric collar, 2 buttons front placket, panels and piping design.

SIZES:
WOMEN'S S - 2XL

MATERIAL:
• Fabric: 100% Polyester



PRICE:

GYM SHORT

32EB4C23



TECHNICAL INFORMATION:

Mizuno DryLite, Lightweight durable fabric, Performance fitting with side panel, elasticated waist band with flat drawstring.

SIZES:

WOMEN'S S - 2XL

MATERIAL:

- Fabric: 100% Polyester

COLOUR PALETTE:



PRICE:

TRACK PANT

32ED4C16



TECHNICAL INFORMATION:

Mizuno ImpermaLite, Light weight performance fit of polyester woven track pant with side pocket, elasticated waist band with flat drawstring, inside leg zipper.

LEG LENGTHS:

Short Leg 32ED4D16

SIZES:

WOMEN'S S - 2XL

MATERIAL:

- Fabric: 100% Polyester

COLOUR PALETTE:



PRICE:

TSURUMI TRACK PANT

32ED4C17



TECHNICAL INFORMATION:

Mizuno ImpermaLite, Light weight performance fit of polyester woven track pant with side pocket, elasticated waist band with flat drawstring, inside leg zipper.

LEG LENGTHS:

Short Leg 32ED4D17

SIZES:

WOMEN'S S - 2XL

MATERIAL:

- Fabric: 100% Polyester

COLOUR PALETTE:



PRICE:

PRESENTATION TRACK PANT

32ED4C27



TECHNICAL INFORMATION:

Mizuno ImpermaLite, Light weight performance fit of polyester woven track pant with side pocket, elasticated waist band with flat drawstring, inside leg zipper.

SIZES:

WOMEN'S S - 2XL

MATERIAL:

• Fabric: 100% Polyester

COLOUR PALETTE:



PRICE:

PRESENTATION TRACK TOP 1/4 ZIP

32EC4C26



TECHNICAL INFORMATION:

Mizuno ImpermaLite, Light weight performance fit of polyester woven track top with 1/4 body zip and side zip pocket.

SIZES:

WOMEN'S S - 2XL

MATERIAL:

• Fabric: 100% Polyester

COLOUR PALETTE:



PRICE:

PRESENTATION TRACK TOP FULL ZIP

32EC4C25



TECHNICAL INFORMATION:

Mizuno ImpermaLite, Light weight performance fit of polyester woven track top with full body zip and side zip pocket.

SIZES:

WOMEN'S S - 2XL

MATERIAL:

• Fabric: 100% Polyester

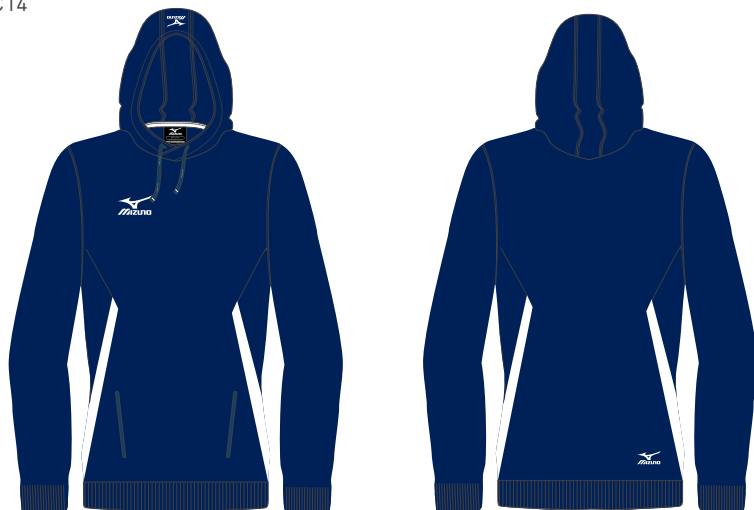
COLOUR PALETTE:



PRICE:

TAISHO HOODED TOP

32EC4C14



TECHNICAL INFORMATION:

Mizuno Warmalite brushed knit cotton/polyester fleece, pullover style with reinforced bar tacks, cotton rib waistband and cuffs, kangaroo style pocket, hood drawcord, performance fit.

SIZES:

WOMEN'S S - 2XL

MATERIAL:

- Fabric: 60% Cotton, 40% Polyester

COLOUR PALETTE:



PRICE:

TSURUMI HOODED TOP

32EC4C15



TECHNICAL INFORMATION:

Mizuno Warmalite brushed knit cotton/polyester fleece, pullover style with reinforced bar tacks, cut and sew design, cotton rib waistband and cuffs, kangaroo style pocket, hood drawcord, performance fit.

SIZES:

WOMEN'S S - 2XL

MATERIAL:

- Fabric: 60% Cotton, 40% Polyester

COLOUR PALETTE:



PRICE:

TSURUMI FLEECE 1/4 ZIP TOP

32EC4C18



TECHNICAL INFORMATION:

Microfleece knit of 100% polyester, Performance fit, 1/4 zipper length, Long sleeve with elastic cuffs, side pockets with zipper, elastic drawcord with toggle at hem.

SIZES:

WOMEN'S S - 2XL

MATERIAL:

- Fabric: 100% Polyester

COLOUR PALETTE:



PRICE:

SOFT SHELL JACKET

32EE4C25



TECHNICAL INFORMATION:

Breathable polyester, Stretch fabric with spandex for added comfort, Front mesh lining, Showerproof outer, Blindstitch, full length body zip, adjustable cuffs and hem, side pocket with zipper, performance fit.

SIZES:

WOMEN'S S - 2XL

MATERIAL:

- Fabric: 85% Polyester, 15% Spandex

COLOUR PALETTE:



PRICE:

SIBERIAN GILET

32EE4C22



TECHNICAL INFORMATION:

Polyester outer shell with high quality dense padding, full length body zip, side pocket, press studs on front, performance fit.

SIZES:

WOMEN'S S - 2XL

MATERIAL:

- Fabric: 100% Polyester

COLOUR PALETTE:



PRICE:

SIBERIAN PADDED JACKET

32EE4C21



TECHNICAL INFORMATION:

Polyester outer shell with high quality dense padding, full length body zip, side pocket cover with flap, rib under the straight sleeve, elastic drawcord with toggle and ring, performance fit.

SIZES:

WOMEN'S S - 2XL

MATERIAL:

- Fabric: 100% Polyester

COLOUR PALETTE:



PRICE:

CLUB SPLASH JACKET

32EE4C28



TECHNICAL INFORMATION:

Superior wind and water protection of 100% Nylon, performance fit, longer body length and lined for additional comfort, long sleeve with elastic cuffs.

SIZES:

WOMEN'S S - 2XL

MATERIAL:

- Fabric: 100% nylon

COLOUR PALETTE:



PRICE:

CLUB SPLASH PANTS

32EF4C24



TECHNICAL INFORMATION:

Superior wind and water protection of 100% Nylon, performance fit with mesh lining, seamsealed, elasticated waistband with flat drawstring, side pocket with zipper.

SIZES:

WOMEN'S S - 2XL

MATERIAL:

- Fabric: 100% nylon

COLOUR PALETTE:



PRICE:

PREMIUM CONTACT TOP

32EE4C19



TECHNICAL INFORMATION:

Superior wind and water protection of 100% Nylon, performance fit longer body length and lined for additional comfort, long sleeve with elastic cuffs.

SIZES:

WOMEN'S S - 2XL

MATERIAL:

- Fabric: 100% nylon

COLOUR PALETTE:



PRICE:

COACHES WET JACKET

32EE4C20



TECHNICAL INFORMATION:

Superior wind and water protection of 100% Nylon, performance fit longer body length and lined for additional comfort, long sleeve with elastic cuffs, Full Zipper length, Side pockets with zipper, elastic drawcord with toggle at hem.

SIZES:

WOMEN'S S - 2XL

MATERIAL:

- Fabric: 100% nylon

COLOUR PALETTE:



PRICE:

COACHES WET 1/4 ZIP JACKET

32EE4D20



TECHNICAL INFORMATION:

Superior wind and water protection of 100% Nylon, performance fit longer body length and lined for additional comfort, long sleeve with elastic cuffs, 1/4 Zipper length, Side pockets with zipper, elastic drawcord with toggle at hem.

SIZES:

WOMEN'S S - 2XL

MATERIAL:

- Fabric: 100% nylon

COLOUR PALETTE:



PRICE:

QUILTED JACKET

32EE4C24



TECHNICAL INFORMATION:

Polyester outer shell with traditional diamond quilted pattern, full length body zip with self fabric cover, side pocket, press studs on front, performance fit.

SIZES:

WOMEN'S S - 2XL

MATERIAL:

- Fabric: 100% polyester

COLOUR PALETTE:



PRICE:





CREATE
YOUR
OWN

STOCK

Warm up and cool down in team colours for a great team spirit and professional look.

AUTHENTIC, JAPANESE, INNOVATION.

GAME SHORT

B55GS000 / JB55GS000



TECHNICAL INFORMATION:

Woven Drill fabric in a durable game short styling with supported seams, elasticated waistband with flat drawstring.

SIZES:

Adult S-4XL Jnr Y6 - YXS

MATERIAL:

- Fabric: 100% cotton

COLOUR PALETTE:



PRICE:

UMEDA SHORT

R2EB4A01 / R2EB4B01



TECHNICAL INFORMATION:

Mizuno Drylite, Woven 100% Polyester, Flat Lock Draw Chord, Inner Grip Waist Band, Gusset.

SIZES:

Adult S-4XL Jnr Y6 - YXS

MATERIAL:

- Fabric: 100% polyester

COLOUR PALETTE:



PRICE:

PRO GOLF POLO

B55GP000 / JB55GP000



TECHNICAL INFORMATION:

Performance fit of polyester knit short sleeve polo, self fabric collar, 2 buttons front placket, panels and piping design.

SIZES:

Adult S-4XL Jnr Y6 - YXS

MATERIAL:

- Fabric: 100% cotton

COLOUR PALETTE:



PRICE:

TRAINING TEE

B55TT000 / JB55TT000



TECHNICAL INFORMATION:
Cotton knit tee in a basic tee styling,
round neck, performance fit.

SIZES:
Adult S-4XL Jnr Y6 - YXS

MATERIAL:
• Fabric: 100% cotton

COLOUR PALETTE:

PRICE:

DESIGN IDEAS



TAKESHI FULL ZIP TRACK PANT

32ED4A01 / 32ED4B01



TECHNICAL INFORMATION:

Mizuno ImpermaLite, Light weight performance fit of polyester woven track pant with side pocket, Both side concealed full zip, elasticated waist band with flat drawstring.

SIZES:

Adult S-4XL Jnr Y6 - YXS

MATERIAL:

- Fabric: 100% polyester micro fibre

COLOUR PALETTE:



PRICE:

TAKESHI GYM SHORT

32EB4A01



TECHNICAL INFORMATION:

Mizuno DryLite, Polyester with Spandex for added comfort and breathable design, Elasticated waistband with flat drawstring, Athletic Fit

SIZES:

Adult XS-4XL

MATERIAL:

- Fabric: 93% polyester, 7% spandex

COLOUR PALETTE:



PRICE:

TAKESHI TECH POLO

32EA4A02



TECHNICAL INFORMATION:

Mizuno DryLite, Performance fit of polyester knit short sleeve polo, self fabric collar, 2 buttons front placket, panels and piping design.

SIZES:

Adult XS-4XL

MATERIAL:

- Fabric: 100% polyester

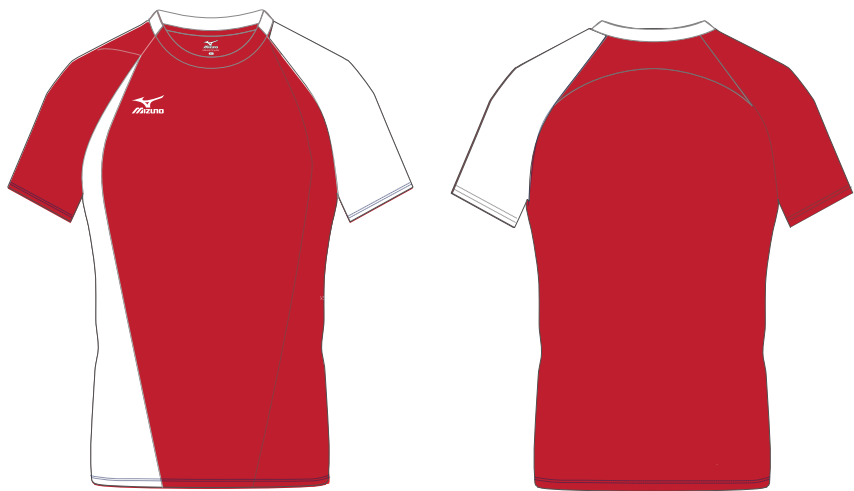
COLOUR PALETTE:



PRICE:

TAKESHI TECH TEE

32EA4A01



TECHNICAL INFORMATION:

Mizuno DryLite, Performance fit of polyester knit short sleeve Tee, panels and piping design.

SIZES:

Adult XS-4XL

MATERIAL:

- Fabric: 100% polyester

COLOUR PALETTE:



PRICE:

TAKESHI HOODIE

32EC4A01 / 32EC4B01



TECHNICAL INFORMATION:

Mizuno Warmalite brushed knit cotton/ polyester fleece, pullover style with reinforced bar tacks, cotton rib waistband and cuffs, two side pocket, hood drawcord, performance fit.

SIZES:

Adult S-4XL Jnr Y6 - YXS

MATERIAL:

- Fabric: 60% Cotton, 40% Polyester

COLOUR PALETTE:



PRICE:

TAKESHI SPLASH TOP

32EE4A01 / 32EE4B01



TECHNICAL INFORMATION:

Superior wind and water protection of 100% Nylon, performance fit longer body length and lined for additional comfort, long sleeve with elastic cuffs and Drawcord adjusted on the hem.

SIZES:

Adult S-4XL Jnr Y6 - YXS

MATERIAL:

- Fabric: 100% Nylon

COLOUR PALETTE:



PRICE:

ASAHI BACKPACK

33EY4W01



TECHNICAL INFORMATION:

600D Gucci Nylon, Embroidered Outline Mizuno Logo, Mizuno Zippers, Size 37x43x18cm

MATERIAL:

- Fabric: 100% nylon

COLOUR PALETTE:



PRICE:

ASAHI KIT BAG

33EY4W02



TECHNICAL INFORMATION:

600D Gucci Nylon, Embroidered Outline Mizuno Logo, Mizuno Zippers, Size 66x25x28cm

MATERIAL:

- Fabric: 100% nylon

COLOUR PALETTE:



PRICE:

ASAHI WHEELIE BAG

33EY4W03



TECHNICAL INFORMATION:

1680D Nylon, Embroidered Outline Mizuno Logo, Mizuno Zippers, Size 82x33x37cm

MATERIAL:

- Fabric: 100% nylon

COLOUR PALETTE:



PRICE:

ASAHI BACKPACK (BESPOKE)

33EY4X01



CREATE
YOUR
OWN

TECHNICAL INFORMATION:
600D Gucci Nylon, Embroidered Outline
Mizuno Logo, Mizuno Zippers, Size
37x43x18cm, Choose your own colours
and add your logo

MATERIAL:
• Fabric: 100% nylon



PRICE:

ASAHI KIT BAG (BESPOKE)

33EY4X02



CREATE
YOUR
OWN

TECHNICAL INFORMATION:
600D Gucci Nylon, Embroidered Outline
Mizuno Logo, Mizuno Zippers, Size
66x25x28cm, Choose your own colours
and add your logo

MATERIAL:
• Fabric: 100% nylon



PRICE:

ASAHI WHEELIE BAG (BESPOKE)

33EY4X03



CREATE
YOUR
OWN

TECHNICAL INFORMATION:
1680D Nylon, Embroidered Outline
Mizuno Logo, Mizuno Zippers, Size
82x33x37cm, Choose your own
colours and add your logo

MATERIAL:
• Fabric: 100% nylon



PRICE:

ADULT SIZES	CHEST (cm/inches)		WAIST (cm/inches)	
X SMALL	84cm	33"	68cm	27"
SMALL	92cm	36"	76cm	30"
MEDIUM	100cm	39"	84cm	33"
LARGE	108cm	42.5"	92cm	36"
X LARGE	116cm	46"	100cm	39"
2X LARGE	124cm	49"	108cm	42.5"
3X LARGE	132cm	52"	116cm	46"
4X LARGE	140cm	55"	124cm	49"

WOMANS SIZES	CHEST (cm/inches)		WAIST (cm/inches)		HIPS (cm/inches)	
6 (2X SMALL)	77cm	30"	57cm	22"	85cm	33"
8 (X SMALL)	82cm	32"	62cm	24"	90cm	35"
10 (SMALL)	87cm	34"	67cm	26"	95cm	37"
12 (MEDIUM)	92cm	36"	72cm	28"	100cm	39"
14 (LARGE)	97cm	38"	77cm	30"	105cm	41"
16 (X LARGE)	102cm	40"	82cm	32"	110cm	43"
18 (2X LARGE)	107cm	42"	87cm	34"	115cm	45"

JUNIOR SIZES	CHEST (cm/inches)		WAIST (cm/inches)	
6	63.5cm	25"	58cm	23"
8	68cm	27"	61cm	24"
10	73cm	29"	65cm	26"
12	79.5cm	31"	69cm	27"
YXS	88/92cm	35/36"	74cm	29"

SOCK SIZING	UK	EURO	US
XS	9-11.5	27-30	8-10
S	12-3	31-36	1-4
M	4-6	37-40	4.5-7.5
L	7-11	40-46	7.5-11.5
XL	12-13	46-47	12.5-13
XXL	14	49	13-14

PRINTING & EMBROIDERY

A full printing and embroidery service is available for your crest, logo and player personalisation. Please see below or speak to your Mizuno sales representative for more information.

Numbers

We recommend 20cm numbers for the back of slim fit jerseys, 25cm for the back of standard fit jerseys and 5cm numbers for shorts, track pants or chest and sleeve positions. The Mizuno logo is cut out, so the fabric behind shows through.

Names

We can add names across the back shoulders, or as initials on the chest / sleeve. All lettering is thermo, 5cm in height and is available in black, navy, scarlet or white. We recommend the thermo option, however screenprinted names are available in requested in shades.

Sublimated garments

There is no additional cost for made-to-order garments and we also accept requests for specific shades. Please provide a Pantone (PMS) shade number for non-standard colours. We can also sublimite numbers and names into any sublimite garment being made-to-order. For non-standard Mizuno numbers please provide images of digits 0-9, for non-standard names please provide font name and file. Please note – Non-standard is only available for sublimite.

Embroidery

We offer a full embroidery service for your crest or logo. If your logo is already set up then we will need an electronic version submitted with your order. We'll also need the details of colours required and a worksheet.

If your logo is not electronically set up then we will need a high resolution logo specification sheet or your brand guidelines so we can set up an embroidery disk for you. Please ensure that you clearly explain how your logo is to appear on both dark and light coloured items, as well as including the size required for your logo. For all new disc set up's an image of the disc will be sent to you for approval before the disc is used.

All embroideries require approval before production is started, they will be sampled onto a swatch and a photograph will be sent electronically to you.

Printing

For your crest or logo there are two services available – screenprint or thermo print. To ensure we provide an accurate print please send a good quality image of your logo electronically. Our preferred formats are vector or high resolution EPS or JPEGs. We do not accept faxed paper copies, garments or letterheads. If your logo has text, please provide the name of the font and for specific logo colours, Pantone (PMS) colours must be submitted.

Sublimated garments – We can sublimite any crests and logos into any sublimite garment that is being made to order. There is no additional cost to the sublimated garment.

Badges

If you want to apply a pre-made badge we are able to do so on many of our fabrics. Please speak to your Mizuno Sales representative for more details. Please remember that certain fabrics will be better suited to some application methods than others, contact your Mizuno Sales representative if you are unsure of the best embellishments to use.

Mizuno cannot accept any responsibility for the unauthorised use of third party logos or images. Please secure permission for the appropriate party before using any logos or images.

Mizuno reserve the right to refuse to print or apply any name or logo considered offensive or unsuitable.

RECOMMENDED FONTS

FLORENCESANS BLACK

ABCDEFGHIJKLMNOPQRSTUVWXYZ

abcdefghijklmnopqrstuvwxyz

1 2 3 4 5 6 7 8 9 0

11 12 13 14 15 16 17 18 19 20

1 2 3 4 5 6 7 8 9 0

BLENDER PRO BOLD

ABCDEFGHIJKLMNOPQRSTUVWXYZ

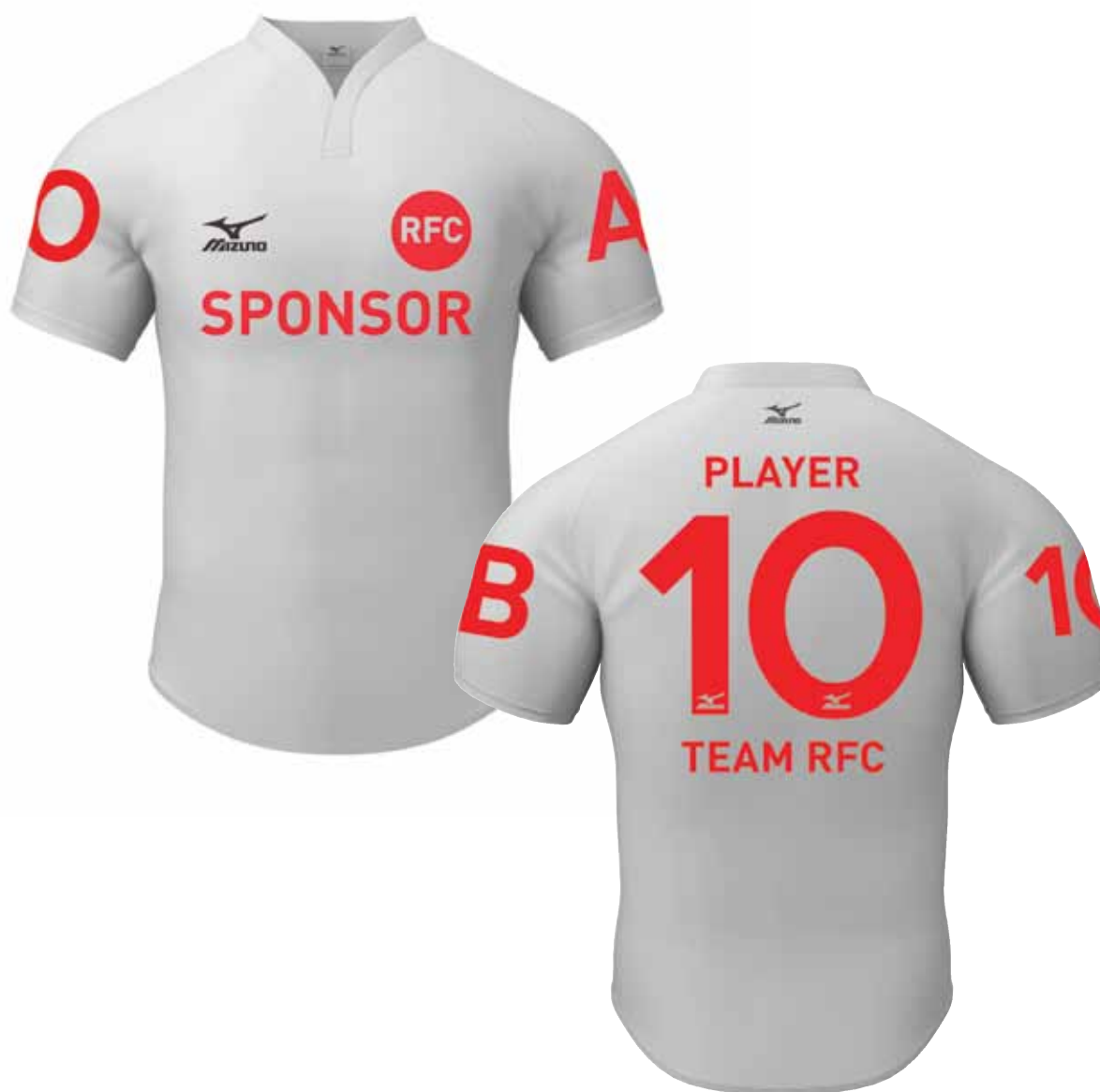
abcdefghijklmnopqrstuvwxyz

1 2 3 4 5 6 7 8 9 0

10 11 12 13 14 15 16 17 18 19 20

1 2 3 4 5 6 7 8 9 0

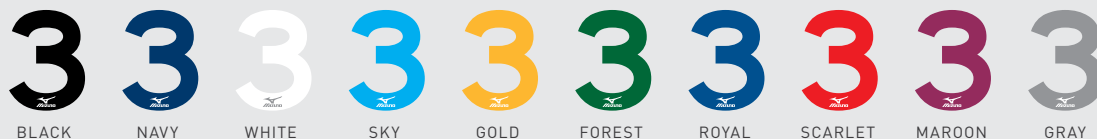
LOGO POSITIONING



THERMO NUMBER OPTIONS

SOLID (ONE COLOUR)

Sizes:
5cm*, 20cm,
25cm



TWO-TONE (TWO COLOURS)

Sizes:
20cm, 25cm



	SUBLIMATION	MARS RED	RED	FUSCHIA	BABY PINK	FOREST	BOTTLE GREEN	EMERALD	GRASS GREEN	LIME	JADE	MAROON	YELLOW	GOLD	AMBER	BLACK	WHITE	GREY	BROWN	NAVY	ROYAL	SKY	PURPLE	CRICKET
MEN'S RUGBY																								
KATANA FITTED SUB SHIRT																								
ELITE SUB SHORT																								
IKUNO TIGHT FIT SHIRT																								
UMEDA SHORT																								
KATANA STANDARD SUB SHIRT																								
ELITE SHORT																								
SHURIKEN STANDARD SUB SHIRT																								
NANIWA SHORT																								
SHURIKEN CUT & SEW SHIRT																								
GAME SHORT																								
WOMEN'S RUGBY																								
LADIES TIGHT FIT SHIRT																								
ELITE SHORT																								
LADIES STANDARD FIT SHIRT																								
ELITE SHORT																								
NETBALL																								
NAMBA SUB DRESS																								
ABENO SUB KNICKER																								
NAMBA CUT & SEW DRESS																								
ABENO KNICKER																								
MINATO TOP																								
MINATO SKORT																								
MEN'S HOCKEY																								
PREMIUM POLO																								
MEN'S GYM SHORT WITH POCKETS																								
MEN'S PREMIUM TEE																								
MEN'S TAKESHI SHORT																								
SUMIYOSHI SUB FLICK POLO TOP																								
SUMIYOSHI SUB FLICK SHORT																								
SUMIYOSHI SUB SCOOP TEE R/N																								
SUMIYOSHI SUB FLICK SHORT																								
WOMEN'S HOCKEY																								
PREMIUM POLO																								
MINATO SKORT																								
PREMIUM TEE																								
SUMIYOSHI SUB FLICK POLO TOP																								
SUMIYOSHI SUB FLICK SKIRT																								
CRICKET																								
TAISHO SHORT SLEEVE SHIRT																								
TAISHO TROUSERS																								
TAISHO JUMPER																								
TAISHO 20/20 SHIRT																								
TAISHO SUB TROUSERS																								
TAISHO SUB JUMPER																								
FOOTBALL																								
YODOGAWA SUB CLUB SHIRT L/S																								
YODOGAWA SUB CLUB SHIRT																								
HIGASHI SUB FOOTBALL SHIRT																								
YODOGAWA C & S CLUB SHORT																								
HIGASHI SUB SHORT																								
HIGASHI SUB FOOTBALL SHORT																								

	SUBLIMATION	MARS RED	RED	FUSCHIA	BABY PINK	FOREST	BOTTLE GREEN	EMERALD	GRASS GREEN	LIME	JADE	MAROON	YELLOW	GOLD	AMBER	BLACK	WHITE	GREY	BROWN	NAVY	ROYAL	SKY	PURPLE	CRICKET
BASKETBALL																								
MINATO R/N SHIRT																								
MINATO V/N SHIRT																								
NISHI SHORT																								
WOMEN'S MINATO R/N SHIRT																								
WOMEN'S MINATO V/N SHIRT																								
WOMEN'S NISHI SHORT																								
VOLLEYBALL																								
PREMIUM MUSCLE VEST																								
PREMIUM MUSCLE VEST SUB																								
GYM SHORT																								
WOMEN'S SUBLIMATED VEST TOP																								
WOMEN'S SUBLIMATED SHORT																								
WOMEN'S GYM SHORT																								
ATHLETICS																								
KONOHANA SINGLET																								
KONOHANA TIGHT SHORT																								
KONOHANA SHORT																								
WOMEN'S KONOHANA SINGLET																								
WOMEN'S KONOHANA KNICKER																								
WOMEN'S KONOHANA SHORT																								
ROWING																								
SUMINOE ALL IN ONE C/S																								
SUMINOE ALL IN ONE C/S																								
SUMINOE ALL IN ONE C/S																								
SUMINOE ALL IN ONE SUB																								
SUMINOE GILLET																								
SUMINOE SPLASH JACKET																								
CYCLING																								
TENNOJI CYCLE JERSEY																								
TENNOJI CYCLE (1/4 ZIP)																								
TENNOJI CLUB CYCLE SHIRT																								
TENNOJI CYCLE VEST																								
TENNOJI BIB CYCLE SHORT																								
TENNOJI CLUB SHORTS																								
SOCKS																								
ANKLE SOCK																								
CREW SOCK																								
HOCKEY SOCK																								
RUGBY SOCK																								
FOOTBALL SOCK																								
MEN'S TRAINING																								
CLUB POLO																								
CLUB TEE																								
PREMIUM POLO																								
PREMIUM TEE																								
PREMIUM MUSCLE VEST																								
PREMIUM MUSCLE VEST SUB																								
GYM SHORT																								
TRACK PANT SINGLE COLOUR																								
TSURUMI TRACK PANT																								
PRESENTATION TRACK PANT																								
PRESENTATION TRACK TOP 1/4 ZIP																								
PRESENTATION TRACK TOP FULL ZIP																								

	SUBLIMATION	MARS RED	RED	FUSCHIA	BABY PINK	FOREST	BOTTLE GREEN	EMERALD	GRASS GREEN	LIME	JADE	MAROON	YELLOW	GOLD	AMBER	BLACK	WHITE	GREY	BROWN	NAVY	ROYAL	SKY	PURPLE	CRICKET
TAISHO HOODED TOP																								
TSURUMI HOODED TOP																								
TSURUMI FLEECE TOP																								
SOFT SHELL JACKET																								
SIBERIAN GILET																								
SIBERIAN JACKET																								
CLUB SPLASH JACKET																								
CLUB SPLASH PANTS																								
PREMIUM CONTACT TOP																								
COACHES WET JACKET																								
BENCH COAT																								
QUILTED JACKET																								
WOMEN'S TRAINING																								
CLUB POLO																								
CLUB TEE																								
PREMIUM GOLF POLO																								
PREMIUM TEE																								
PREMIUM CAPPED TEE																								
PREMIUM CAPPED POLO																								
GYM SHORT																								
TRACK PANT																								
TSURUMI TRACK PANT																								
PRESENTATION TRACK PANT																								
PRESENTATION TRACK TOP																								
PRESENTATION TRACK TOP																								
TAISHO HOODED TOP																								
TSURUMI HOODED TOP																								
TSURUMI FLEECE 1/4 ZIP TOP																								
SOFT SHELL JACKET																								
SIBERIAN GILET																								
SIBERIAN PADDED JACKET																								
CLUB SPLASH TOP																								
CLUB SPLASH PANTS																								
PREMIUM CONTACT TOP																								
COACHES WET JACKET																								
COACHES WET 1/4 ZIP JACK																								
QUILTED JACKET																								
STOCK																								
GAME SHORT																								
UMEDA SHORT																								
PRO GOLF POLO																								
CLUB TEE																								
TAKESHI FULL ZIP TRACK PANT																								
TAKESHI GYM SHORT																								
TAKESHI TECH POLO																								
TAKESHI TECH TEE																								
TAKESHI HOODIE																								
TAKESHI SPLASH TOP																								
LUGGAGE																								
ASAHI BACKPACK																								
ASAHI KIT BAG																								
ASAHI WHEELIE BAG																								
ASAHI BACKPACK BESPOKE																								
ASAHI KIT BAG BESPOKE																								
ASAHI WHEELIE BAG BESPOKE																								

UK – MIZUNO CORPORATION

MIZUNO HOUSE, 612 READING ROAD, WINNERSH, WOKINGHAM, BERKSHIRE RG41 5HE, UK
TEL: +44 (0)118 936 2100



MIZUNO.CO.UK